

Adroddiad i: PWYLLGOR CYNLLUNIO A GORCHMYNION

Dyddiad: 6 Medi 2023

Pwnc: GORCHYMYN RHEOLEIDDIO TRAFFIG
CYNGOR SIR YNYS MÔN

Aelod Portffolio: Y CYNGHORYDD DAFYDD RHYS THOMAS

Swyddog Arweiniol: Gethin Gilford

Swyddog Cyswllt: Alun Roberts

Natur a rheswm dros adrodd:

I adrodd ar fanylion y gwrthwynebiad a'r sylwadau a dderbyniwyd yn dilyn hysbysebu nifer o Orchmynion Rheoleiddio Traffig arfaethedig ar gyfer nifer o leoliadau mewn perthynas â rhannau o ffyrdd fydd yn cael eu heithrio o'r terfyn cyflymder 20mya gorfodol fydd yn cael ei roi ar waith ar hyd a lled Ynys Môn maes o law.

Darparu penderfyniad ynghylch sut y dylai'r Awdurdod fwrw ymlaen â'r Gorchmynion Rheoleiddio Traffig o ystyried y sylwadau a'r gwrthwynebiad a dderbyniwyd.

A. CYFLWYNIAD / CEFNDIR / MATERION

1.0 Cynigiwyd y Gorchmynion Rheoleiddio Traffig fel rhan o'r broses o gyflwyno'r terfyn cyflymder 20mya mandadol newydd ar hyd a lled Ynys Môn. Yn unol â rhaglen Llywodraeth Cymru i ostwng cyflymder mewn ardaloedd preswyl, bydd pob ffordd sydd â statws ffordd gyfyngedig oherwydd bod arni system o oleuadau stryd a lle mae'r terfyn presennol yn 30mya yn gostwng i 20mya oni bai y bydd yn cael ei heithrio fel arall. Daw'r mesur hwn i rym ar hyd a lled Cymru ar 17 Medi 2023.

Ar y cyd â Llywodraeth Cymru / Trafnidiaeth Cymru, mae'r Awdurdod wedi nodi nifer o leoliadau lle'r oedd o'r farn na ddylai'r terfyn cyflymder 20mya newydd fod yn berthnasol ac y dylai'r terfyn 30mya presennol barhau i fod ar waith. Seiliwyd y meini prawf ar ddwysedd eiddo preswyl a manwerthu cyfagos sydd wedi eu lleoli ar hyd ffordd ac agosatrwydd cyfleusterau megis sefydliadau addysgiadol, canolfannau cymuned ac ysbytai. Cynhaliwyd adolygiad pellach o'r lleoliadau hyn gan yr Awdurdod, yn seiliedig ar wybodaeth leol a barn broffesiynol, er mwyn penderfynu a oedd yn briodol eithrio'r rhannau o ffyrdd a nodwyd.

Roedd canllawiau a ddarparwyd gan Lywodraeth Cymru'n nodi y dylai eithriadau gael eu hystyried yn bennaf ar ffyrdd dosbarth A a B ac na ddylai isafswm hyd terfyn cyflymder fod yn llai na 300m ar ffyrdd sydd â swyddogaeth mynediad lleol.

Nodwyd yr eithriadau terfyn cyflymder o 30mya arfaethedig yn y lleoliadau a ganlyn

-

- B5109 Pont y Brenin, Llangoed
- A5025 Bae Cemaes
- A5025 Pentraeth
- B5110 Marianglas
- A5 Penrhos, Caergybi
- A4080 Brynsiencyn
- A5 Gaerwen
- A5 Caergeiliog
- B4545 Pont-rhyd-y-bont
- Ffordd Gyswllt Llangefni
- A5 & A4080 Llanfairpwll
- A545 Porthaethwy
- A5 Gwalchmai

Mae copi o bob Rhybudd o Fwriad a chynlluniau sy'n manylu ar yr eithriadau arfaethedig ynghlwm yn Atodiad 1.

- 1.1 Roedd yr ymgyngoriad cychwynnol ar y cynnig yn cynnwys y gwasanaethau brys, cynrychiolwyr y diwydiant cludo nwyddau a llwythi ar lorïau, aelodau etholedig a chynghorau tref a chymuned. Yn ystod y cam hwn yn y broses statudol derbyniwyd dau sylw.

Dywedodd y Cyngorydd Geraint Bebb y dylid lleihau hyd y rhan o ffordd gyswllt Llangefni yr argymhellir ei heithrio ac y dylai'r rhan o'r ffordd rhwng Cylchfan Ysgol y Graig a Chylchfan Coleg Menai fod yn 20mya. Ystyriwyd y sylwadau gan yr Awdurdod Priffyrdd ac adolygwyd y lleoliad. Yn unol â chanllawiau Llywodraeth Cymru, gosodir terfyn cyflymder o 20mya ar y rhan o'r ffordd o flaen estyniad newydd Ysgol y Graig. Barnwyd nad oedd gweddill y rhan o'r ffordd yn bodloni'r gofynion na'r canllawiau i gyfyngu'r cyflymder i 20mya ac felly cynigir fod y terfyn cyflymder o 30mya yn aros.

Cyflwynodd Cyngor Cymuned Trewalchmai sylw ar yr eithriad arfaethedig ar yr A5 wrth iddi ddynesu at y pentref rhwng y ganolfan ailgylchu a Wylfa Terrace. Roedd y Cyngor Cymuned o'r farn y dylai hyd yr eithriad fod yn llai ac y dylai'r cyfyngiad 20mya gychwyn ar bwynt ymhellach tu allan i'r pentref na'r hyn a oedd yn cael ei gynnig. Adolygodd yr Awdurdod Priffyrdd y lleoliad hwn yn unol â'r canllawiau perthnasol a phenderfynodd nad oedd cyfiawnhad dros ymestyn y terfyn cyflymder 20mya ymhellach tu allan i'r pentref.

- 1.2 Nid oedd y Gwasanaethau Brys yn gwrthwynebu'r cynigion.
- 1.3 Yn ystod y cam hysbysebu cyhoeddus ffurfiol, cysylltodd tri ar ddeg o bobl â'r awdurdod i fynegi eu barn ar y Gorchmynion arfaethedig. Roedd yr ohebiaeth yn

cynnwys sylwadau ac anghytundeb cyffredinol ynglŷn â chyflwyno'r ardaloedd 20mya newydd, yn ogystal â chefnogaeth i hyn. Roedd tri yn gwneud sylwadau am leoliadau penodol lle'r oeddent o'r farn y dylid eithrio rhannau pellach o ffyrdd. Fodd bynnag, nid oedd y lleoliadau'n gysylltiedig â'r rhannau neu'r ffyrdd a gynhwyswyd yn y Gorchmynion arfaethedig y manylir arnynt yn yr adroddiad hwn felly ni ystyriwyd eu bod yn berthnasol. Dim ond un gwrthwynebiad oedd yn cyfeirio'n benodol at gynnig yn y Gorchmynion arfaethedig. Oherwydd hynny, barnwyd mai dim ond yr ymateb hwn y gellid ei ystyried yn berthnasol ac yn gymwys i fod yn wrthwynebiad dilys.

1.4 Mae copïau wedi'u golygu o'r ohebiaeth a dderbyniwyd ynghlwm yn yr adroddiad hwn.

1.5 Roedd y sylwadau a'r gwrthwynebiad wedi'u seilio'n fras ar y sail ganlynol –

- a) Bod y bwriad i gyflwyno'r parthau 20mya newydd ar hyd a lled yr Ynys yn ddianghenraid a byddai'n andwyol i yrwyr o ran yr amser ychwanegol y byddai'n ei gymryd i deithio o un lle i'r llall ac y dylai terfyn o'r fath gael ei roi ar waith mewn lleoliadau penodol yn unig, megis tu allan i ysgolion, yn hytrach na chyflwyno terfyn cyffredinol.
- b) Roedd un ymateb o'r farn nad oedd yr Awdurdod wedi argymhell rhannau digonol o ffyrdd i'w heithrio o'r terfyn 20mya newydd trwy Amlwch. Hefyd, roedd un arall o'r farn mai dim ond rhan fer o'r A5025 trwy Fennelech ddylai fod â therfyn o 20mya ac y dylid eithrio'r rhannau eraill. Roedd un ymatebydd o'r farn na ddylid gostwng y cyflymder i 20mya ar unrhyw ffordd dosbarth A a gofynnodd pam nad oedd yr Awdurdod wedi ystyried unrhyw eithriadau ar yr A5025 trwy Amlwch a Benllech. Fel y nodwyd ym Mhwynt 1.3, nid yw'r Gorchmynion arfaethedig yn cyfeirio at y lleoliadau penodol hyn felly barnwyd nad oedd y sylwadau'n berthnasol.
- c) Derbyniwyd un gwrthwynebiad i'r eithriad arfaethedig ar yr A5025 yng Nghemaes a nododd y dylid gostwng y cyflymder ar y rhan hon o'r ffordd i 20mya.

2.0 Y Sefyllfa Bresennol

2.1 O'r 13 sylw a dderbyniwyd, barnwyd mai dim ond un oedd yn berthnasol ac yn ddilys ac a oedd yn gymwys i'w ystyried fel gwrthwynebiad i'r cynnig. Mae rhai o'r sylwadau'n cyfeirio'n gyffredinol at gyflwyno'r ardaloedd 20mya newydd ac mae eraill yn cyfeirio at leoliadau lle dylid eithrio rhannau ychwanegol o ffyrdd. Fodd bynnag, mae'r lleoliadau dan ystyriaeth yn yr Hysbysebion a hysbysebwyd yn nodi lleoliadau penodol i'w heithrio o'r terfynau 20mya cyffredinol newydd fydd yn cael

eu cyflwyno ym mis Medi 2023. Mae un yn cyfeirio'n benodol at leoliad a gynhwyswyd yn y Gorchmynion arfaethedig ac, oherwydd hynny, ystyrir mai hwn yn unig sy'n berthnasol ac yn ddilys i'w ystyried fel gwrthwynebiad.

- 2.2 Nid yw'r gwrthwynebydd y cyfeirir ato yn 1.3 yn fodlon fod y darpariaethau yn y Gorchmynion a hysbysebwyd yn dderbyniol.
- 2.3 Derbyniwyd gwrthwynebiad i'r eithriad arfaethedig ar yr A5025 yng Nghemaes, rhwng Ystâd Gwelfor a'r gylchfan. Nododd y gwrthwynebydd faterion yn ymwneud â chydymffurfiaeth â'r terfyn cyflymder presennol o 30mya ar y rhan hon o'r A5025 sydd, yn eu barn nhw, yn rhwystro cerddwyr rhag defnyddio'r palmant. Roedd y gwrthwynebydd yn dymuno i'r rhan hon gael ei chynnwys yn y terfyn cyflymder 20mya arfaethedig ar gyfer Amlwch.
- 2.4 Cysylltwyd â'r Ymgynghoreion Statudol isod –
- a) Heddlu Gogledd Cymru
 - b) Gwasanaeth Tân ac Achub Gogledd Cymru
 - c) Y Gwasanaeth Ambiwylans
 - d) Y Gymdeithas Cludo Nwyddau ar Lorïau
 - e) Y Gymdeithas Cludo Llwythi
 - f) Aelodau Etholedig
 - g) Cynghorau Tref a Chymuned
- 2.5 Fel rhan o'r broses o ystyried y gwrthwynebiad a dderbyniwyd, adolygodd yr Awdurdod y cynigion ar gyfer yr A5025 yng Nghemaes. Oherwydd sylwadau'r gwrthwynebydd, ystyriodd yr Awdurdod newidiadau i faint yr ardal arfaethedig a nodwyd ar gyfer ei heithrio.
- Wrth ystyried y rhannau o'r ffyrdd i'w heithrio fel sy'n cael ei gynnig yn yr Hysbysebion a hysbysebwyd, dilynodd yr Awdurdod y meini prawf cenedlaethol a ddarparwyd gan Lywodraeth Cymru. Cynhaliodd ei adolygiadau pellach ei hun hefyd i benderfynu bod yr ardaloedd hyn yn addas i gael eu heithrio ac y dylai'r terfyn cyflymder aros ar 30mya ac nad oedd angen ei ostwng i 20mya.
- Roedd yr Awdurdod o'r farn fod yr eithriad arfaethedig, sef 30mya ar yr A5025 yng Nghemaes rhwng y mynediad i Ystâd Gwelfor a'r gylchfan, yn gyson â meini prawf Llywodraeth Cymru. Yn benodol, byddai'r hyd o 340m yn fwy na'r isafswm pellter sy'n cael ei argymhell ar gyfer terfyn cyflymder. Yn ogystal, o ystyried natur a swyddogaeth y ffordd, a chydag ychydig iawn o ddatblygiad preswyl gerllaw, byddai'n afrealistig disgwyl i yrwyr yrru ar gyflymder o 20mya ar y rhan hon o'r A5025.

B. YSTYRIAETHAU

3.0 Ystyrir bod y Gorchmynion arfaethedig a'r rhannau eithriedig o ffyrdd a nodwyd yn hanfodol er mwyn cyflwyno'r terfyn cyflymder diofyn o 20mya sydd ar y gorwel yn effeithiol ar ffyrdd cyfyngedig yng Nghymru, a ddaw i rym ar 17 Medi 2023.

3.1 Mater i'r Pwyllgor fydd penderfynu a ydynt yn teimlo fod cyfiawnhad dros y gwrthwynebiad a dderbyniwyd ai peidio.

C. GOBLYGIADAU AC EFFEITHIAU

4.0 Bydd y gorchmynion arfaethedig yn creu rhannau o ffyrdd 30mya fel eithriad i'r terfyn cyflymder diofyn o 20mya ar ffyrdd cyfyngedig.

Wrth ystyried y gwrthwynebiad a dderbyniwyd i'r rhannau eithriedig arfaethedig o ffyrdd, dylid cydbwysu'r effaith bosib ar gyflymder traffig yn erbyn yr angen i sicrhau fod dull cyson yn cael ei ddefnyddio wrth benderfynu ar derfynau cyflymder lleol yn seiliedig ar ganllawiau cenedlaethol a ffactorau ac amgylchiadau lleol.

D. ARGYMHELLIAD

5.0 Bod y Pwyllgor yn cymeradwyo'r cynigion yn unol â'r Gorchmynion a'r cynlluniau a hysbysebwyd os yw'n fodlon nad oes datrysiadau eraill a'i fod yn penderfynu y dylai'r Awdurdod fwrw ymlaen a chadarnhau'r Gorchmynion Rheoleiddio Traffig a'r Cynlluniau.

Mewn perthynas â'r gwrthwynebiad a dderbyniwyd, bod y Pwyllgor yn penderfynu –

- Cytuno bod terfyn o 30mya yn parhau ar y rhan o'r ffordd rhwng Ystâd Gwelfor a'r gylchfan ar yr A5025, fel y manylir yn y Gorchmynyn drafft, a bod hwn a'r gorchmynion drafft eraill a restrir yn yr adroddiad hwn yn cael eu cadarnhau.

Enw Awdur yr Adroddiad: Alun Roberts

Teitl Swydd: Peiriannydd Grŵp Rheoli Traffig a Datblygu

Dyddiad: 31 Gorffennaf 2023

Atodiadau

1. Rhybudd o Fwriad fel y cafodd ei hysbysebu a chynllun.
2. Copïau o sylwadau a gwrthwynebiad a dderbyniwyd yn ystod y cam hysbysebu.

Atodiad 1

Rhybudd o Fwriad fel y cafodd ei hysbysebu a chynllun ar gyfer lleoliad pob eithriad.

B5109 Pont-y-Brenin, Llangoed

RHYBUDD O FWRIAD / NOTICE OF PROPOSAL

GORCHYMYN CYNGOR SIR YNYS MONISLE OF
ANGLESEY COUNTY COUNCIL (B5109 PONT-Y-BRENIN,
LLANGOED) (TERFYN CYFLYMDER 30MYA) 2023

RHODDIR RHYBUDD TRWY HYN fod Cyngor Sir Ynys Môn/Isle of Anglesey County Council yn bwriadu gwneud Gorchymyn o dan adrannau 84(1) a (2) a 124 a Rhan IV Atodlen 9 o Ddeddf Rheoli Trafnidiaeth Ffyrdd 1984.

Effaith y Gorchymyn arfaethedig fydd darparu terfyn cyflymder o 30 mya ar y dam o'r ffordd a ddisgrifir yn yr Atodlen I'r Rhybudd hon.

Mae'n bosib i'r cyhoedd archwilio copi o'r Gorchymyn drafft, y Map a'r Datganiad o Resymau'r Cyngor dros wneud y Gorchymyn yn Swyddfa'r Cyngor, Llanelni neu yn llyfrgell Beaumaris (yn ystod oriau swyddfa arferol). Neu bydd copi o'r Gorchymyn drafft, Map a'r Datganiad o Resymau'r Cyngor ar gael ar wefan y Cyngor www.ymysmon.gov.uk/gorchymynion-cyfreithiol neu fe ddanfonir copi caled o'r Gorchymyn a'r Map drwy'r post ar gais ac am ddim os cysylltwch â Swan.Jones@ymysmon.llyw.cymru neu 01248 752591 (yn ystod oriau swyddfa arferol).

Os dymunwch writhwynebu'r Gorchymyn arfaethedig anfonwch eich gwrthwynebiad mewn ysgrifan gan gynnwys eich rhesymau dros wneud hynny i'r Isod erbyn: **2il Mehefin 2023**. Bydd rhain ar gael i'w harchwilio gan y cyhoedd.

Os gwneir y Gorchymyn ar ôl ystyried yr holl sylwadau, caiff ei wneud ar neu ar ôl 17 Medi 2023 pan fydd y terfyn cyflymder rhagosoddedig o 20mya ar gyfer ffyrdd cyfyngedig wedi dod i rym.

ATODLEN

TERFYN CYFLYMDER 30MYA ARFAETHEDIG

B5109 PONT-Y-BRENIN, LLANGOED

O'r gyffordd fwyaf deheuol â Phont y Brenin, am bellter o 179 metr i gyfeiriad y de.

Dyddiedig10/06/2023..... Dated

Arwyddwyd..... Signed

ROBYN W JONES

Rheolwr Gwasanaethau Cyfreithiol / Legal Services Manager
Swyddfeydd y Cyngor / Council Offices
Llanelni, Ynys Môn LL77 7TW

Am fwy o fanylion ynghyd â'r uchod ffoniwch 01248 752370.

Croesi i chi ddalo gyda'r Cyngor yn Gymraeg neu'n Saesneg. Cewch yr un safon o wasanaeth yn y ddwy iaith.

CYNGOR SIR YNYS MONISLE OF ANGLESEY
COUNTY COUNCIL (B5109 PONT-Y-BRENIN,
LLANGOED) (30MPH SPEED LIMIT) ORDER 2023

NOTICE IS HEREBY GIVEN that Cyngor Sir Ynys Môn/Isle of Anglesey County Council proposes to make an Order under sections 84(1) and (2) and 124 and Part IV of Schedule 9 of the Road Traffic Regulation Act 1984.

The effect of the proposed Order will be to provide a 30mph speed limit on the length of road described in the Schedule to this Notice.

It is possible to inspect a copy of the draft Order, Order Map and Statement of the Council's reasons for making the Order at the Council Offices, Llanelni or at Beaumaris library during normal office hours. Alternatively, a copy of the draft Order, Order Map and Statement of Reasons is available on the Council's website www.anglesey.gov.uk/legal-orders or a hard copy of the Order and Order Map will be sent in the post free of charge on request if you contact Swan.Jones@ymysmon.llyw.cymru or 01248 752591 (during normal office hours).

If you wish to object to the proposed Order you should send your objection in writing specifying the ground thereof to the undersigned at the address specified by the: **2nd June 2023**. These will be available for public inspection.

If the Order is made after taking all representations into account, it will be made on or after 17 September 2023 when the default speed limit of 20mph for restricted roads has come into force.

SCHEDULE

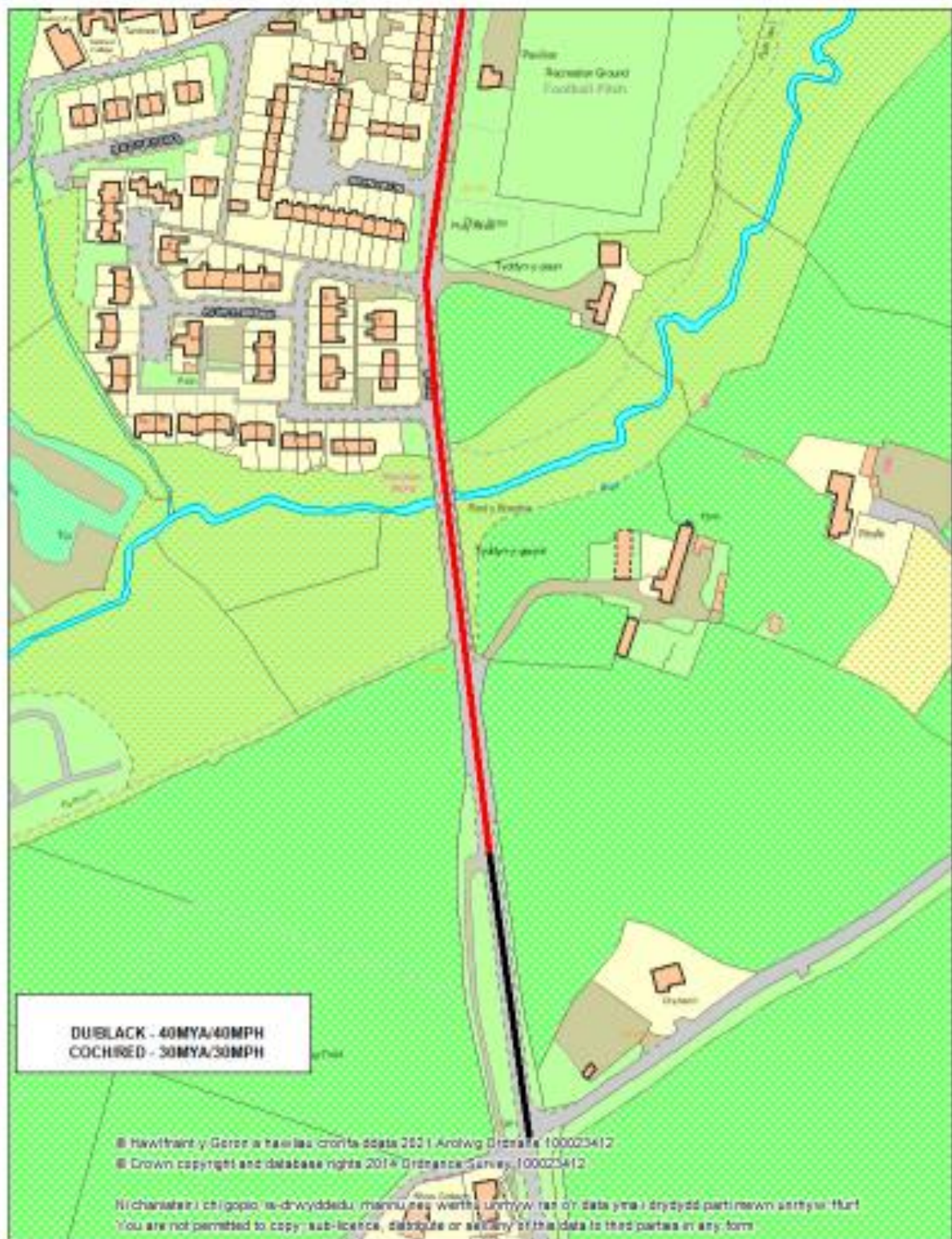
PROPOSED 30 MPH SPEED LIMIT

B5109 PONT-Y-BRENIN, LLANGOED

From the southernmost junction with Pont Y Brenin for a distance of 179 metres in a southerly direction.

For further information regarding the above please telephone 01248 752370.

You are welcome to deal with the Council in Welsh or English. You will receive the same standard of service in both languages.



**CYNGOR SIR
 YNYS MÔN
 ISLE OF ANGLESEY
 COUNTY COUNCIL**

**CYNGOR SIR YNYS MÔN
 ISLE OF ANGLESEY COUNTY COUNCIL**
 Stryddfa'r Sir
 LLANGFN
 Ynys Môn - Anglesey
 LL77 7TW

**B5109 Pont Y Brenin, Llangoed
 Cyn 17 Medi
 Elore 17th September**



CYNGOR SIR
 YNYS MÔN
 ISLE OF ANGLESEY
 COUNTY COUNCIL

CYNGOR SIR YNYS MÔN
 ISLE OF ANGLESEY COUNTY COUNCIL
 Stryddfa'r Sir
 Llangefni
 Ynys Môn - Anglesey
 LL77 7TW

B5109 Pont Y Bronis, Llanggoed
 Ar ôl 17 Medi
 After 17th September

A5025 Bae Cemaes

RHYBUDD O FWRIAD / NOTICE OF PROPOSAL

GORCHYMYN CYNGOR SIR YNYS MON/ISLE OF ANGLESEY COUNTY COUNCIL (A5025 CEMAES) (TERFYN CYFLYMDER 30MYA) 202-

RHODDIR RHYBUDD TRWY HYN fod Cyngor Sir Ynys Môn/Isle of Anglesey County Council yn bwriadu gwneud Gorchymyn o dan adrannau 84(1) a (2) a 124 a Rhan IV Atodlen 9 o Ddeddf Rheoli Trafnidiaeth Ffyrdd 1984.

Effaith y Gorchymyn arfaethedig fydd darparu terfyn cyflymder o 30 mya ar y darnau o'r ffordd a ddisgrifir yn yr Atodlen i'r Rhybudd hwn.

Mae'n bosib i'r cyhoedd archwilio copi o'r Gorchymyn drafft, y Mapiau a'r Datganiad o resymau'r Cyngor dros wneud y Gorchymyn yn Swyddfa'r Cyngor, Llangedfni neu yn llyfrgell Amlwch (yn ystod oriau swyddfa arferol). Neu bydd copi o'r Gorchymyn drafft, Mapiau a'r Datganiad o Resymau'r Cyngor ar gael ar wefan y Cyngor www.ynysmon.gov.uk/gorchymynion-cyfreithiol neu fe ddanfonir copi caled o'r Gorchymyn a'r Mapiau drwy'r post ar gais ac am ddim os cysylltwch â Siwan.Jones@ynysmon.llyw.cymru neu 01248 752591 (yn ystod oriau swyddfa arferol).

Os dymunwch wrthwynebu'r Gorchymyn arfaethedig anfonwch eich gwrthwynebiad mewn ysgrifen gan gynnwys eich rhesymau dros wneud hynny i'r isod erbyn: **2il Mehefin 2023**. Bydd rhain ar gael i'w harchwilio gan y cyhoedd.

Os gwneir y Gorchymyn ar ôl ystyried yr holl sylwadau, caiff ei wneud ar neu ar ôl 17 Medi 2023 pan fydd y terfyn cyflymder rhagosodedig o 20mya ar gyfer ffyrdd cyfyngedig wedi dod i rym.

ATODLEN

TERFYN CYFLYMDER 30MYA ARFAETHEDIG

1.1 A5025 BAE CEMAES

O bwynt 41 metr i'r gogledd-ddwyrain o'r gyffordd â Gwelfor am bellter o 348 metr i gyfeiriad y de-orllewin.

1.2 A5025 BAE CEMAES, OCHR WYLFA

O bwynt 267 metr i'r gorllewin o'r gyffordd â Maes Capel am bellter o 358 metr i gyfeiriad y de-orllewin.

CYNGOR SIR YNYS MON/ISLE OF ANGLESEY COUNTY COUNCIL (A5025 CEMAES BAY) (30MPH SPEED LIMIT) ORDER 202-

NOTICE IS HEREBY GIVEN that Cyngor Sir Ynys Môn/Isle of Anglesey County Council proposes to make an Order under sections 84(1) and (2) and 124 and Part IV of Schedule 9 of the Road Traffic Regulation Act 1984.

The effect of the proposed Order will be to provide a 30mph speed limit on the lengths of road described in the Schedule to this Notice.

It is possible to inspect a copy of the draft Order, Order Maps and Statement of the Council's reasons for making the Order at the Council Offices, Llangedfni or at Amlwch library during normal office hours. Alternatively, a copy of the draft Order, Order Maps and Statement of Reasons is available on the Council's website www.anglesey.gov.uk/legal-orders or a hard copy of the Order and Order Maps will be sent in the post free of charge on request if you contact Siwan.Jones@ynysmon.llyw.cymru or 01248 752591 (during normal office hours).

If you wish to object to the proposed Order you should send your objection in writing specifying the ground thereof to the undersigned at the address specified by the: **2nd June 2023**. These will be available for public inspection.

If the Order is made after taking all representations into account, it will be made on or after 17 September 2023 when the default speed limit of 20mph for restricted roads has come into force.

SCHEDULE

PROPOSED 30 MPH SPEED LIMIT

1.1 A5025 CEMAES BAY

From a point 41 metres north east of the junction with Gwelfor for a distance of 348 metres in a south westerly direction.

1.2 A5025 CEMAES BAY, WYLFA SIDE

From a point 267 metres west from the junction with Maes Capel for a distance of 358 metres in a south westerly direction.

Dyddiedig10/05/2023..... Dated

Arwyddwyd..... Signed

ROBYN W JONES

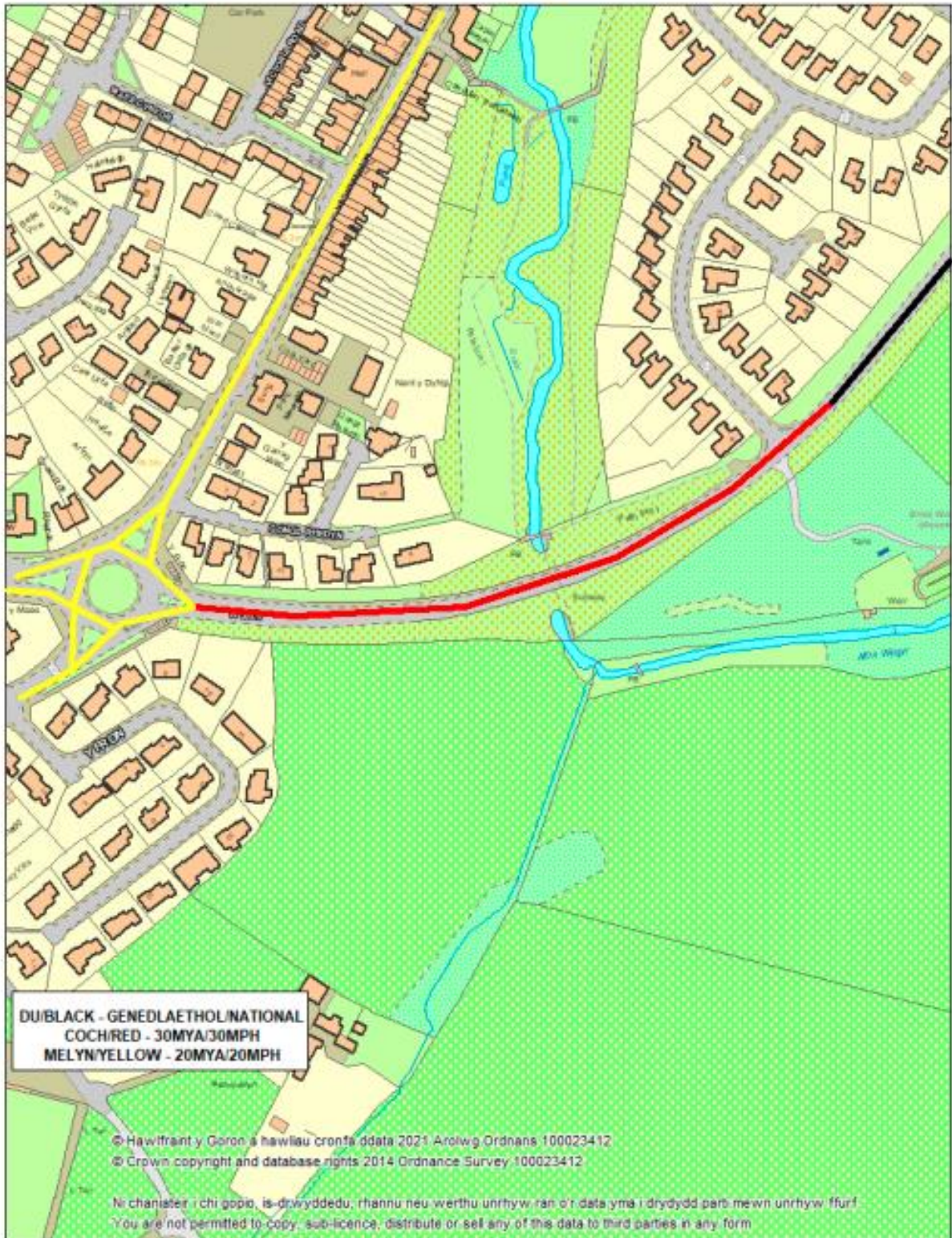
Rheolwr Gwasanaethau Cyfreithiol / Legal Services Manager
Swyddfeydd y Cyngor / Council Offices
Llangedfni, Ynys Mon LL77 7TW

Am fwy o fanylion ynghlyn â'r uchod ffoniwch 01248 752370.

For further information regarding the above please telephone 01248 752370.

Croesi i chi ddelio gyda'r Cyngor yn Gymraeg neu'n Saesneg. Cewch yr un safon o wasanaeth yn y ddwy iaith.

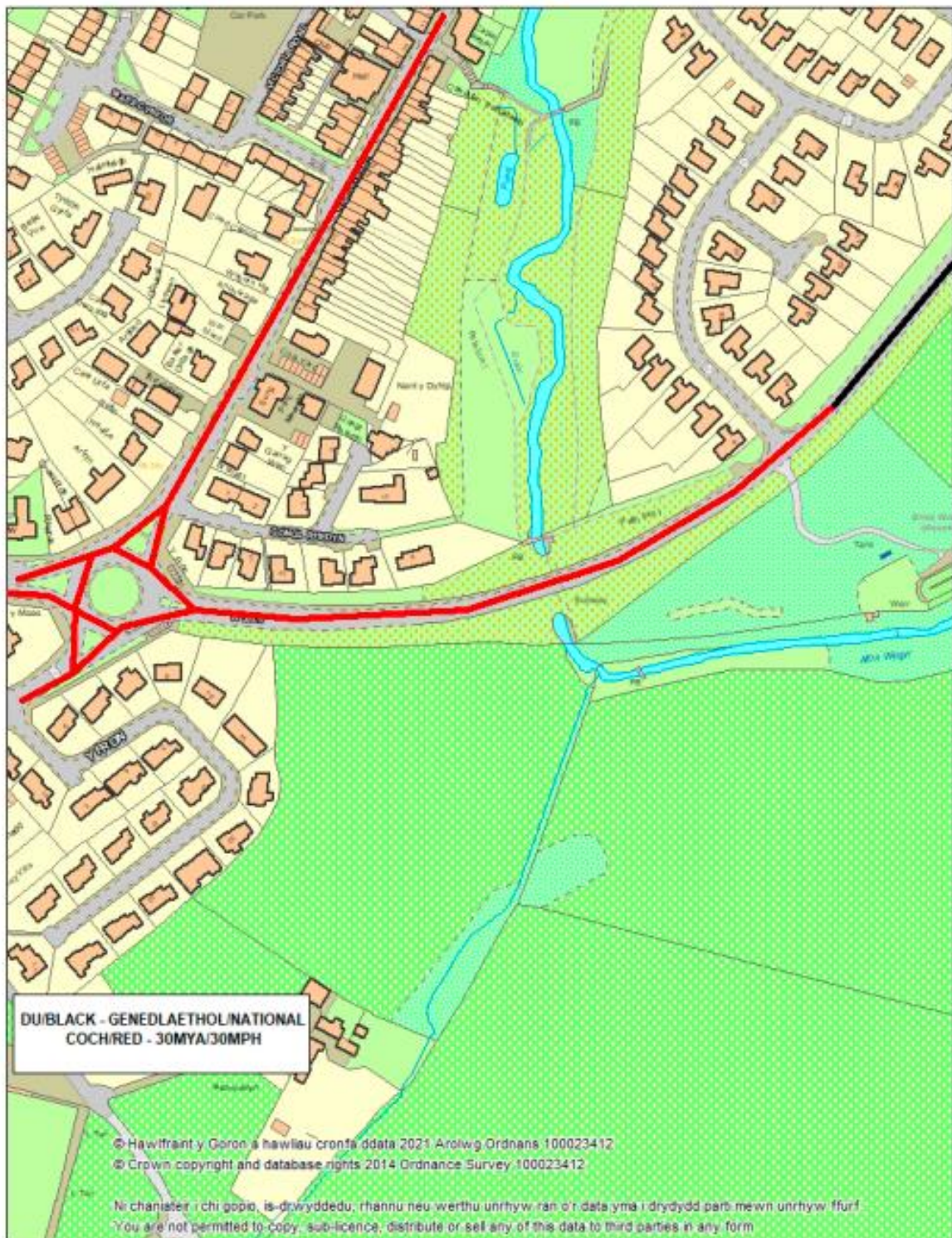
You are welcome to deal with the Council in Welsh or English. You will receive the same standard of service in both languages.



**CYNGOR SIR
 YNYS MÔN**
**ISLE OF ANGLESEY
 COUNTY COUNCIL**

CYNGOR SIR YNYS MÔN
ISLE OF ANGLESEY COUNTY COUNCIL
 Swyddfa'r Sir
 LLANGFNI
 Ynys Môn - Anglesey
 LL77 7TW

A5025 Cemaes
Ar ôl 17 Medi
After 17th September



**CYNGOR SIR
YNYS MÔN
ISLE OF ANGLESEY
COUNTY COUNCIL**

**CYNGOR SIR YNYS MÔN
ISLE OF ANGLESEY COUNTY COUNCIL**
Swyddfa'r Sir
LLANGEFNI
Ynys Môn - Anglesey
LL77 7TW

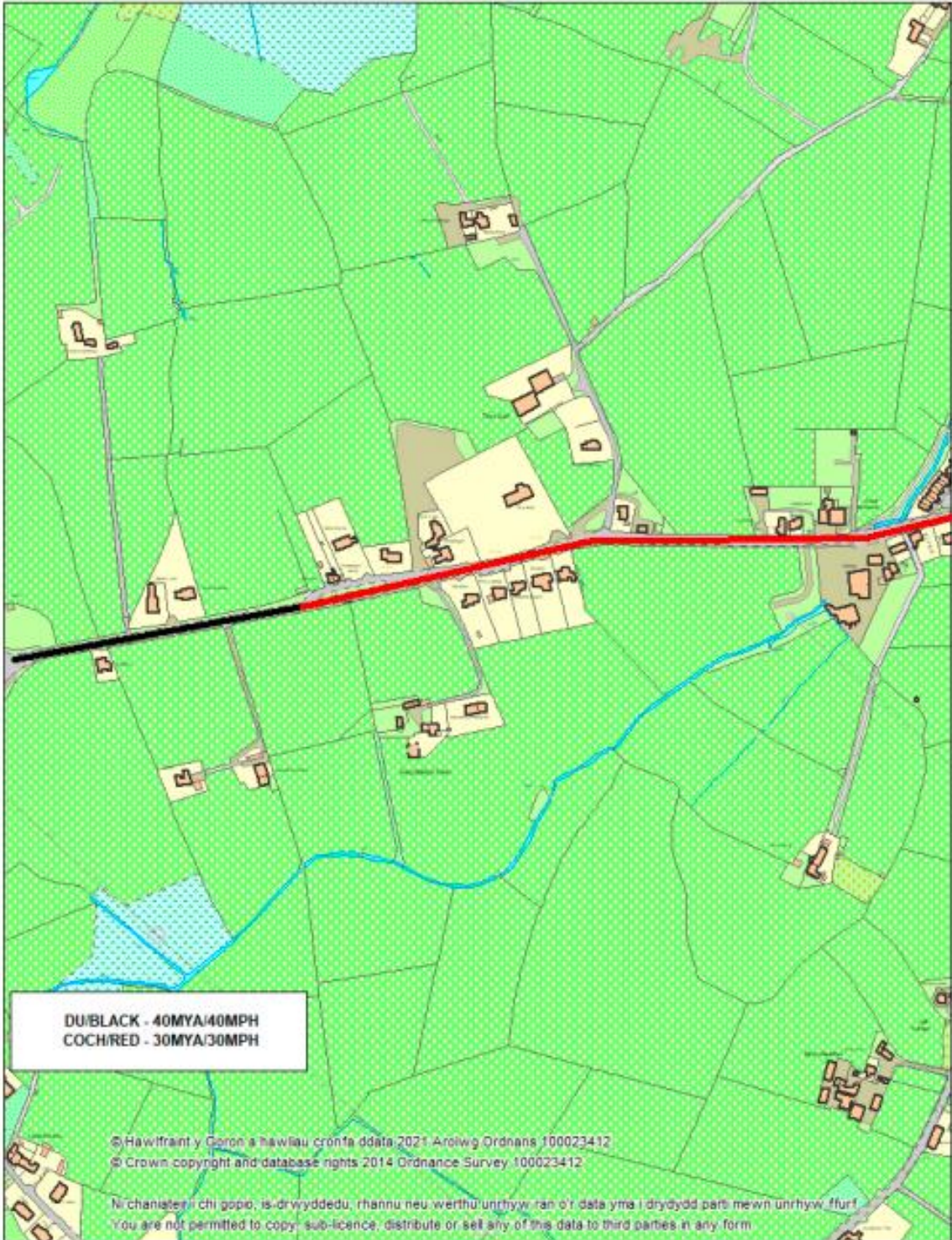
**A5025 Cemaes
Cyn 17 Medi
Before 17th September**



CYNGOR SIR
 YNYS MÔN
 ISLE OF ANGLESEY
 COUNTY COUNCIL

CYNGOR SIR YNYS MÔN
 ISLE OF ANGLESEY COUNTY COUNCIL
 Swyddfa'r Sir
 LLANGFNÍ
 Ynys Môn - Anglesey
 LL77 7TW

A5025 Cemaes, ochr Wylfa
 A5025 Cemaes, Wylfa side
 Ar ôl 17 Medi
 After 17th September



**CYNGOR SIR
YNYS MÔN
ISLE OF ANGLESEY
COUNTY COUNCIL**

**CYNGOR SIR YNYS MÔN
ISLE OF ANGLESEY COUNTY COUNCIL**
Swyddfa'r Sir
LLANGEFNI
Ynys Môn - Anglesey
LL77 7TW

**A5025 Cemaes, ochr Wylfa
A5025 Cemaes, Wylfa side
Cyn 17 Medi
Before 17th September**

Pentraeth a Marianglas

RHYBUDD O FWRIAD / NOTICE OF PROPOSAL

GORCHYMYN CYNGOR SIR YNYS MON/ISLE OF ANGLESEY COUNTY COUNCIL (PENTRAETH A MARIANGLAS) (TERFYN CYFLYMDER 30MYA) 202-

RHODDIR RHYBUDD TRWY HYN fod Cyngor Sir Ynys Môn/Isle of Anglesey County Council yn bwriadu gwneud Gorchymyn o dan adrannau 84(1) a (2) a 124 a Rhan IV Atodlen 9 o Ddeddf Rheoli Trafnidiaeth Ffyrdd 1984.

Effaith y Gorchymyn arfaethedig fydd darparu terfyn cyflymder o 30 mya ar y darnau o ffyrdd a ddisgrifir yn yr Atodlen i'r Rhybudd hwn.

Mae'n bosib i'r cyhoedd archwilio copi o'r Gorchymyn drafft, y Mapiau a'r Datganiad o resymau'r Cyngor dros wneud y Gorchymyn yn Swyddfa'r Cyngor, Llangefni neu yn llyfrgell Benllech (yn ystod oriau swyddfa arferol). Neu bydd copi o'r Gorchymyn drafft, Mapiau a'r Datganiad o Resymau'r Cyngor ar gael ar wefan y Cyngor www.ynysmon.gov.uk/gorchymynion-cyfreithiol neu fe ddanfonir copi caled o'r Gorchymyn a'r Mapiau drwy'r post ar gais ac am ddim os cysylltwch â Siwan.Jones@ynysmon.llyw.cymru neu 01248 752591 (yn ystod oriau swyddfa arferol).

Os dymunwch wrthwynebu'r Gorchymyn arfaethedig anfonwch eich gwrthwynebiad mewn ysgrifen gan gynnwys eich rhesymau dros wneud hynny i'r isod erbyn: **2il Mehefin 2023**. Bydd rhain ar gael i'w harchwilio gan y cyhoedd.

Os gwneir y Gorchymyn ar ôl ystyried yr holl sylwadau, caiff ei wneud ar neu ar ôl 17 Medi 2023 pan fydd y terfyn cyflymder rhagosoddedig o 20mya ar gyfer ffyrdd cyfyngedig wedi dod i rym.

ATODLEN 1

TERFYN CYFLYMDER 30MYA ARFAETHEDIG

1.1 A5025 GAREJ PENTRAETH, PENTRAETH
O bwynt 144 metr i'r de o'r gyffordd â'r B5109 am bellter o 290 metr i gyfeiriad y de.

1.2 A5025 FFORDD PENTRAETH, PENTRAETH
O'r gyffordd â Stryd Brics am bellter o 1202 metr i gyfeiriad y gogledd-orllewin.

ATODLEN 2

TERFYN CYFLYMDER 30MYA ARFAETHEDIG

B5110 MARIANGLAS
O bwynt 123 metr i'r gogledd-dwyrain o'r gyffordd â Glasffordd am bellter o 673 metr i gyfeiriad y de-dwyrain.

CYNGOR SIR YNYS MON/ISLE OF ANGLESEY COUNTY COUNCIL (PENTRAETH AND MARIANGLAS) (30MPH SPEED LIMIT) ORDER 202-

NOTICE IS HEREBY GIVEN that Cyngor Sir Ynys Môn/Isle of Anglesey County Council proposes to make an Order under sections 84(1) and (2) and 124 and Part IV of Schedule 9 of the Road Traffic Regulation Act 1984.

The effect of the proposed Order will be to provide a 30mph speed limit on the lengths of roads described in the Schedules to this Notice.

It is possible to inspect a copy of the draft Order, Order Maps and Statement of the Council's reasons for making the Order at the Council Offices, Llangefni or at Benllech library during normal office hours. Alternatively, a copy of the draft Order, Order Maps and Statement of Reasons is available on the Council's website www.anglesey.gov.uk/legal-orders or a hard copy of the Order and Order Maps will be sent in the post free of charge on request if you contact Siwan.Jones@ynysmon.llyw.cymru or 01248 752591 (during normal office hours).

If you wish to object to the proposed Order you should send your objection in writing specifying the ground thereof to the undersigned at the address specified by the: **2nd June 2023**. These will be available for public inspection.

If the Order is made after taking all representations into account, it will be made on or after 17 September 2023 when the default speed limit of 20mph for restricted roads has come into force.

SCHEDULE 1

PROPOSED 30 MPH SPEED LIMIT

1.1 A5025 PENTRAETH GARAGE, PENTRAETH
From a point 144 metres south of the junction with the B5109 for a distance of 290 metres in a southerly direction.

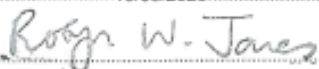
1.2 A5025 PENTRAETH ROAD, PENTRAETH
From the junction with Brick Street for a distance of 1202 metres in a north westerly direction.

SCHEDULE 2

PROPOSED 30 MPH SPEED LIMIT

B5110 MARIANGLAS
From a point 123 metres northeast from the junction with Glasffordd for a distance of 673 metres in a south easterly direction.

Dyddiedig10/05/2023..... Dated

Arwyddwyd  Signed

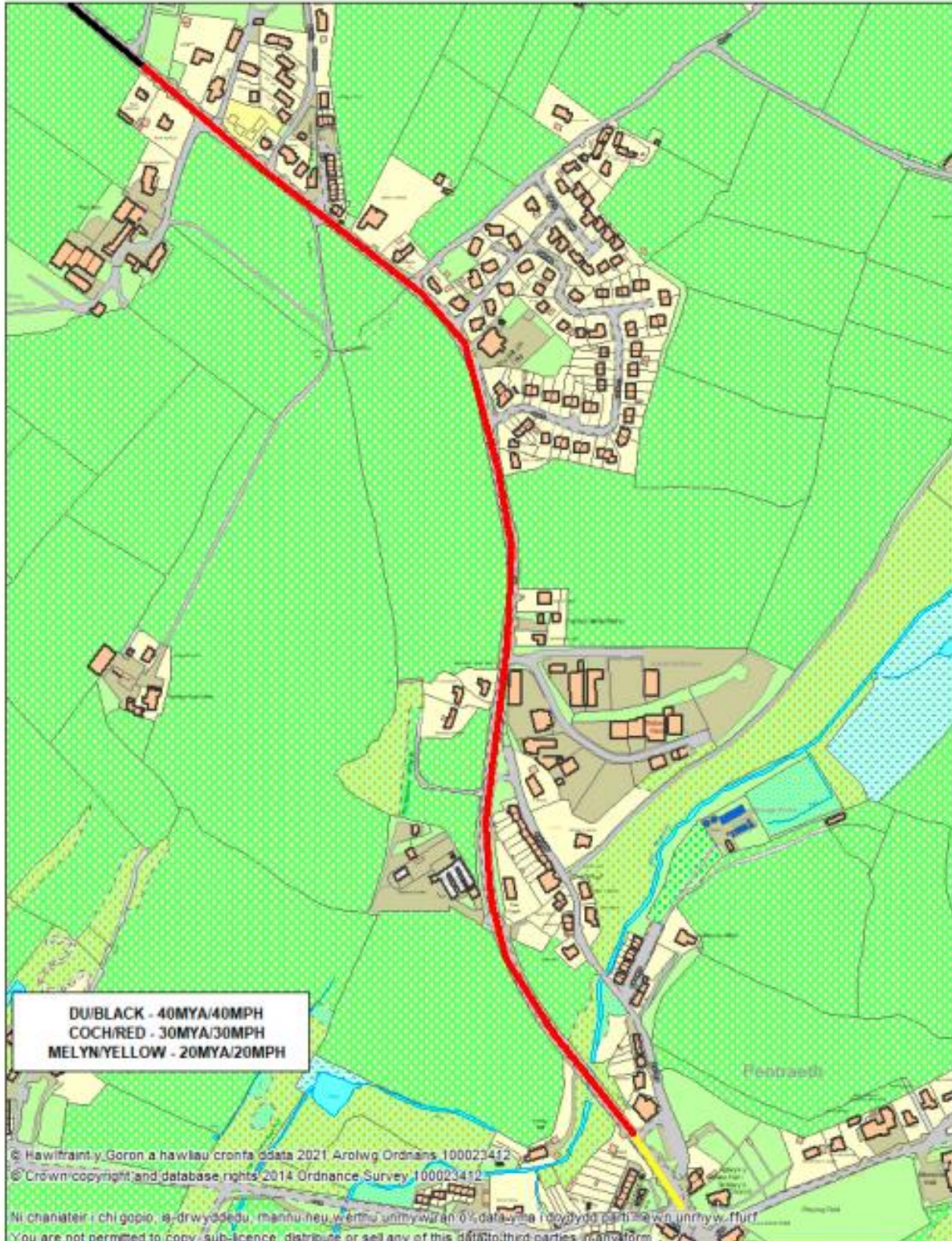
ROBYN W JONES
Rheolwr Gwasanaethau Cyfreithiol / Legal Services Manager
Swyddfeydd y Cyngor / Council Offices
Llangefni, Ynys Mon LL77 7TW

Am fwy o fanylion ynghlyn â'r uchod ffoniwch 01248 752370.

For further information regarding the above please telephone 01248 752370.

Croesi i chi ddello gyda'r Cyngor yn Gymraeg neu'n Saesneg. Cewch yr un safon o wasanaeth yn y ddwy iaith.

You are welcome to deal with the Council in Welsh or English. You will receive the same standard of service in both languages.

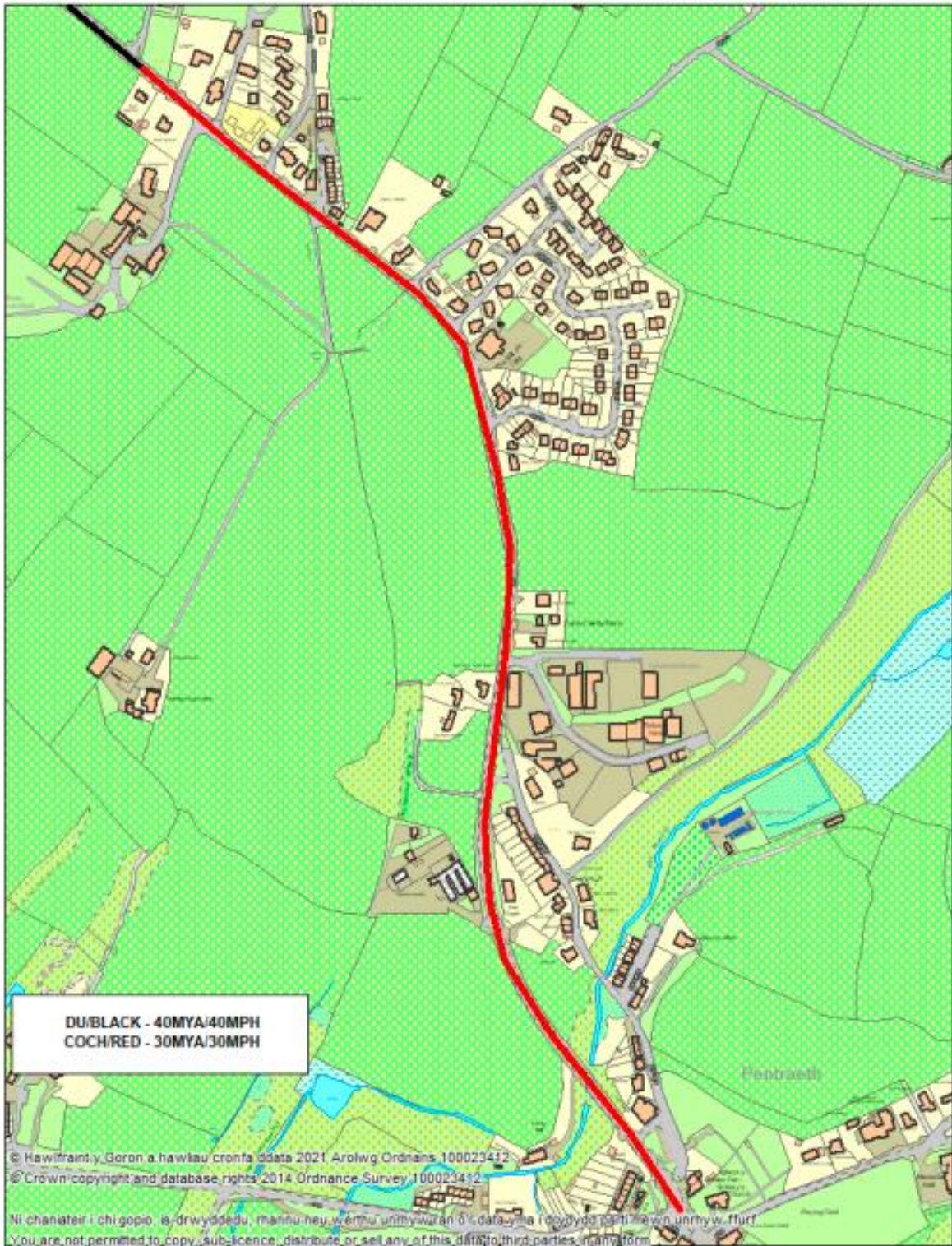


**CYNGOR SIR
 YNYS MÔN**
**ISLE OF ANGLESEY
 COUNTY COUNCIL**

CYNGOR SIR YNYS MÔN
ISLE OF ANGLESEY COUNTY COUNCIL
 Swyddfa'r Sir
 LLANGEFNI
 Ynys Môn - Anglesey
 LL77 7TW

Pentraeth Road, Pentraeth
Ar ôl 17 Medi
After 17th September

#



**CYNGOR SIR
YNYS MÔN**
**ISLE OF ANGLESEY
COUNTY COUNCIL**

CYNGOR SIR YNYS MÔN
ISLE OF ANGLESEY COUNTY COUNCIL
Swyddfa'r Sir
LLANGFNÍ
Ynys Môn - Anglesey
LL77 7TW

Pentraeth Road, Pentraeth
Cyn 17 Medi
Before 17th September



**CYNGOR SIR
 YNYS MÔN**
ISLE OF ANGLESEY
 COUNTY COUNCIL

CYNGOR SIR YNYS MÔN
ISLE OF ANGLESEY COUNTY COUNCIL
 Swyddfa'r Sir
 LLANGFNFI
 Ynys Môn - Anglesey
 LL77 7TW

A5025 Pentraeth Garage

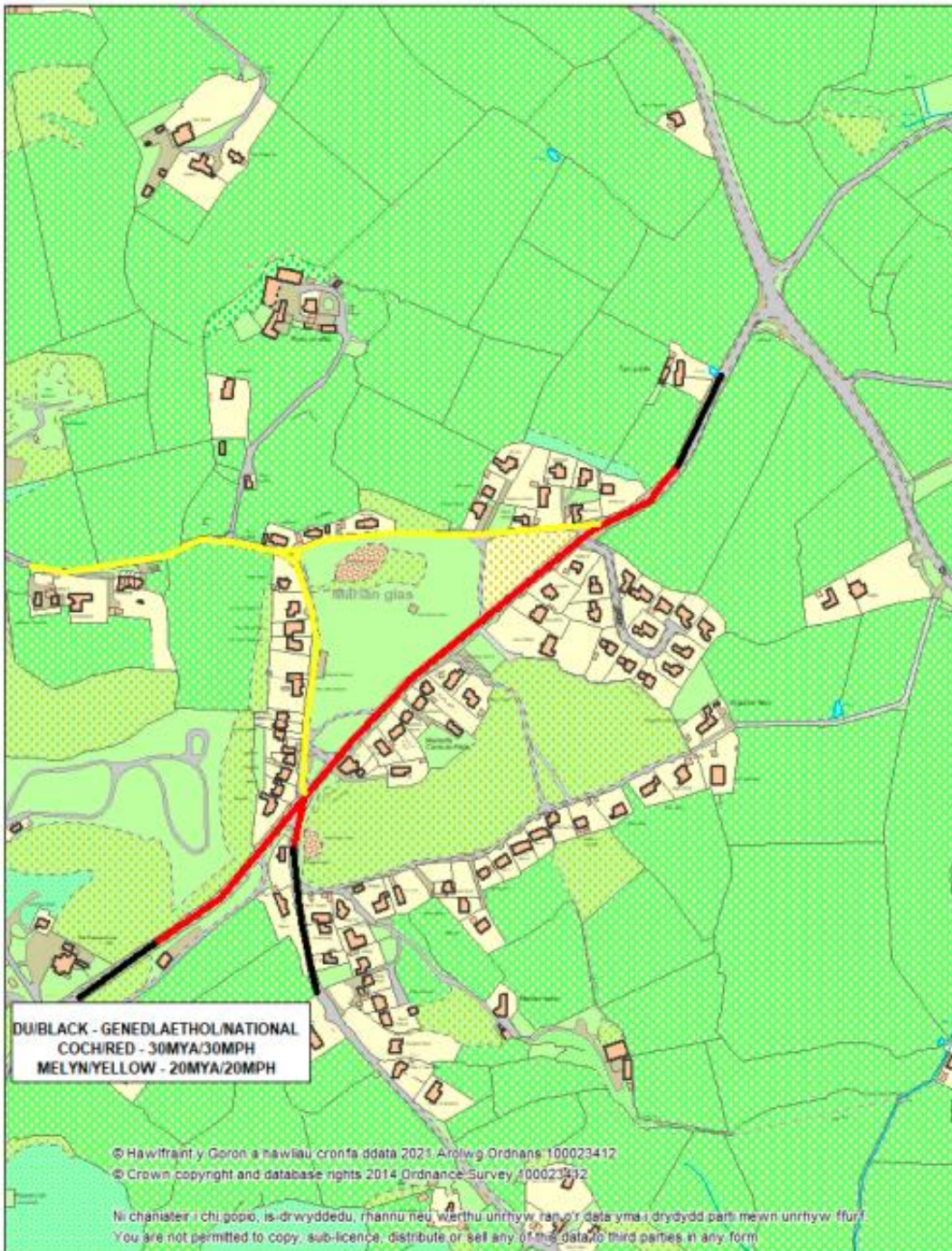
Ar ôl 17 Medi
After 17th September



CYNGOR SIR
YNYS MÔN
ISLE OF ANGLESEY
COUNTY COUNCIL

CYNGOR SIR YNYS MÔN
ISLE OF ANGLESEY COUNTY COUNCIL
Swyddfa'r Sir
LLANGFENI
Ynys Môn - Anglesey
LL77 7TW

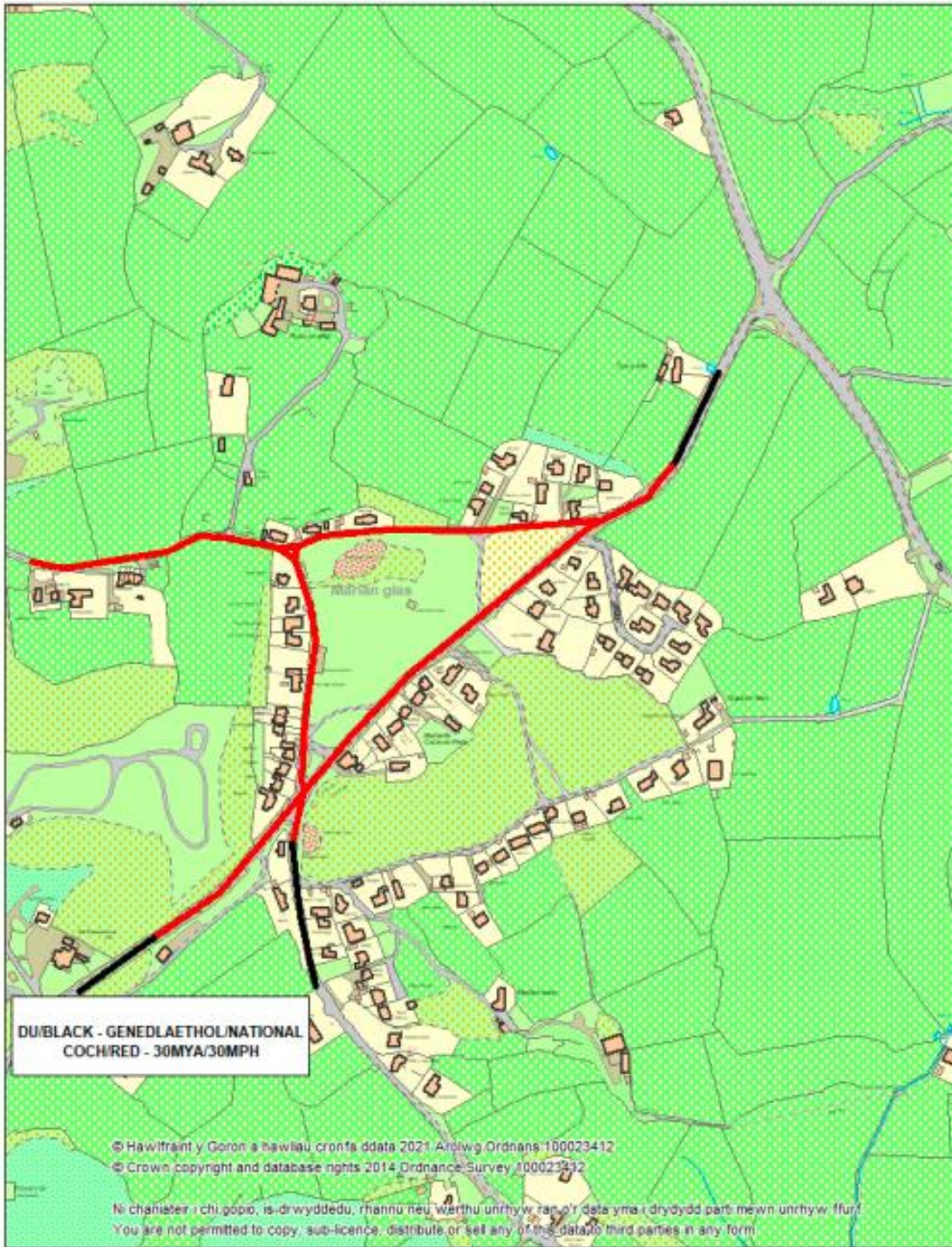
A5025 Pentraeth Garage
Cyn 17 Medi
Bfore 17th September



CYNGOR SIR
YNYS MÔN
ISLE OF ANGLESEY
COUNTY COUNCIL

CYNGOR SIR YNYS MÔN
ISLE OF ANGLESEY COUNTY COUNCIL
Swyddfa'r Sir
LLANGFNÍ
Ynys Môn - Anglesey
LL77 7TW

B5110 Marianglas
Ar ôl 17 Medi
After 17th September



DU/BLACK - GENEDLAETHOL/NATIONAL
COCH/RED - 30MYA/30MPH

© Hawlfraint y Goron a hawliau cronfa ddata 2021 Ardwg Ordnans 100023412
© Crown copyright and database rights 2014 Ordnance Survey 100023332

Ni chaniater i chi gopïo, is-drwyddedu, rhannu neu werthu unrhyw ran o'r data yma i drydydd parti mewn unrhyw ffurf.
You are not permitted to copy, sub-licence, distribute or sell any of this data to third parties in any form.



**CYNGOR SIR
YNYS MÔN
ISLE OF ANGLESEY
COUNTY COUNCIL**

**CYNGOR SIR YNYS MÔN
ISLE OF ANGLESEY COUNTY COUNCIL**
Swyddfa'r Sir
LLANGEFNI
Ynys Môn - Anglesey
LL77 7TW

**B5110 Marianglas
Cyn 17 Medi
Before 17th September**

A5 Penrhos, Caergybi

RHYBUDD O FWRIAD / NOTICE OF PROPOSAL

GORCHYMYN CYNGOR SIR YNYS MON/ISLE OF ANGLESEY COUNTY COUNCIL (A5 PENRHOS, CAERGYBI) (TERFYN CYFLYMDER 30MYA) 202-

RHODDIR RHYBUDD TRWY HYN fod Cyngor Sir Ynys Môn/Isle of Anglesey County Council yn bwriadu gwneud Gorchymyn o dan adrannau 84(1) a (2) o Ddeddf Rheoli Trafnidiaeth Ffyrdd 1984.

Effaith y Gorchymyn arfaethedig fydd darparu terfyn cyflymder o 30 mya ar y darn o'r ffordd a ddisgrifir yn yr Atodlen i'r Rhybudd hwn.

Mae'n bosib i'r cyhoedd archwilio copi o'r Gorchymyn drafft, y Map a'r Datganiad o resymau'r Cyngor dros wneud y Gorchymyn yn Swyddfa'r Cyngor, Llangefni neu yn llyfrgell Caergybi (yn ystod oriau swyddfa arferol). Neu bydd copi o'r Gorchymyn drafft, Map a'r Datganiad o Resymau'r Cyngor ar gael ar wefan y Cyngor www.ynysmon.gov.uk/gorchymynion-cyfreithiol neu fe ddanfonir copi caled o'r Gorchymyn a'r Map drwy'r post ar gais ac am ddim os cysylltwch â Siwan.Jones@ynysmon.llyw.cymru neu 01248 752591 (yn ystod oriau swyddfa arferol).

Os dymunwch wrthwynebu'r Gorchymyn arfaethedig anfonwch eich gwrthwynebiad mewn ysgrifen gan gynnwys eich rhesymau dros wneud hynny i'r isod erbyn: **2il Mehefin 2023**. Bydd rhain ar gael i'w harchwilio gan y cyhoedd.

Os gwneir y Gorchymyn ar ôl ystyried yr holl sylwadau, caiff ei wneud ar neu ar ôl 17 Medi 2023 pan fydd y terfyn cyflymder rhagosodedig o 20mya ar gyfer ffyrdd cyfyngedig wedi dod i rym.

ATODLEN

TERFYN CYFLYMDER 30MYA ARFAETHEDIG

A5 PENRHOS, CAERGYBI

O bwynt 256 metr i'r de-ddwyrain o'r gyffordd a Lôn Traeth Penrhos am bellter o 347 metr i gyfeiriad y gortlewin.

Dyddiedig10/05/2023..... Dated

Arwyddwyd*Robyn W. Jones*.....Signed

ROBYN W JONES
Rheolwr Gwasanaethau Cyfreithiol / Legal Services Manager
Swyddfeydd y Cyngor / Council Offices
Llangefni, Ynys Mon LL77 7TW

Am fwy o fanylion ynghlyn â'r uchod ffoniwch 01248 752370.

Croesi i chi ddelio gyda'r Cyngor yn Gymraeg neu'n Saesneg. Cewch yr un safon o wasanaeth yn y ddwy iaith.

CYNGOR SIR YNYS MON/ISLE OF ANGLESEY COUNTY COUNCIL (A5 PENRHOS, HOLYHEAD) (30MPH SPEED LIMIT) ORDER 202-

NOTICE IS HEREBY GIVEN that Cyngor Sir Ynys Môn/Isle of Anglesey County Council proposes to make an Order under sections 84(1) and (2) of the Road Traffic Regulation Act 1984.

The effect of the proposed Order will be to provide a 30mph speed limit on the length of road described in the Schedule to this Notice.

It is possible to inspect a copy of the draft Order, Order Map and Statement of the Council's reasons for making the Order at the Council Offices, Llangefni or at Holyhead library during normal office hours. Alternatively, a copy of the draft Order, Order Map and Statement of Reasons is available on the Council's website www.anglesey.gov.uk/legal-orders or a hard copy of the Order and Order Map will be sent in the post free of charge on request if you contact Siwan.Jones@ynysmon.llyw.cymru or 01248 752591 (during normal office hours).

If you wish to object to the proposed Order you should send your objection in writing specifying the ground thereof to the undersigned at the address specified by the: **2nd June 2023**. These will be available for public inspection.

If the Order is made after taking all representations into account, it will be made on or after 17 September 2023 when the default speed limit of 20mph for restricted roads has come into force.

SCHEDULE

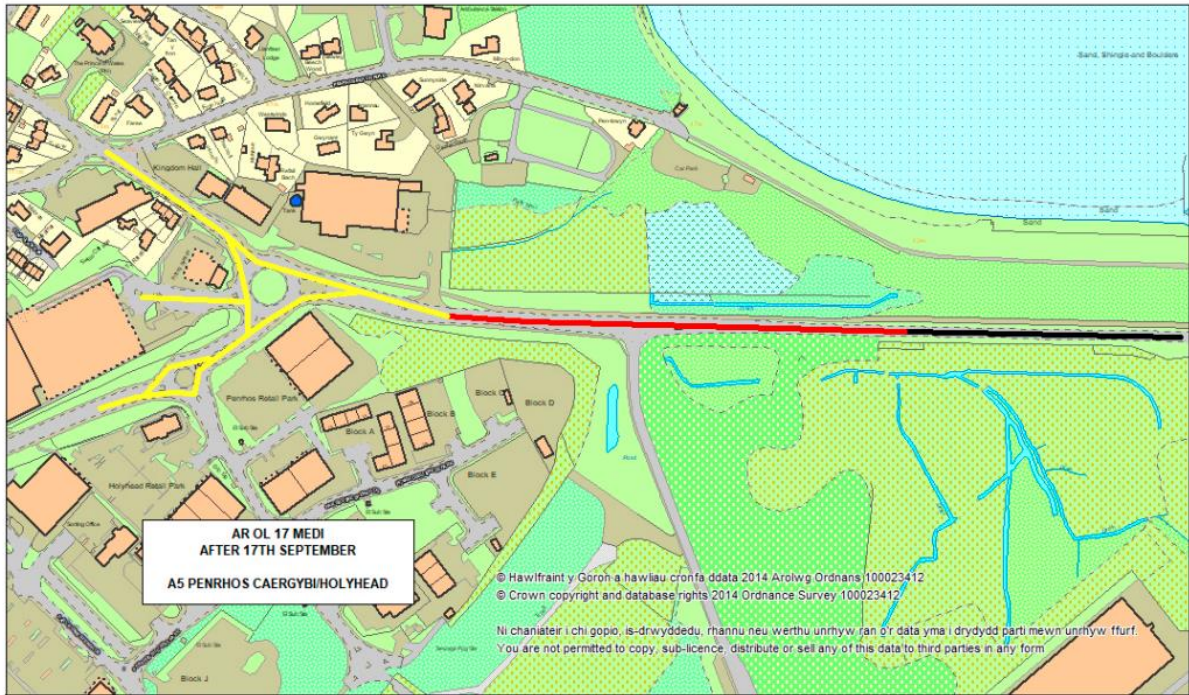
PROPOSED 30 MPH SPEED LIMIT

A5 PENRHOS, HOLYHEAD

From a point 256 metres southeast of the junction with Penrhos Beach Road for a distance of 347 metres in a westerly direction.

For further information regarding the above please telephone 01248 752370.

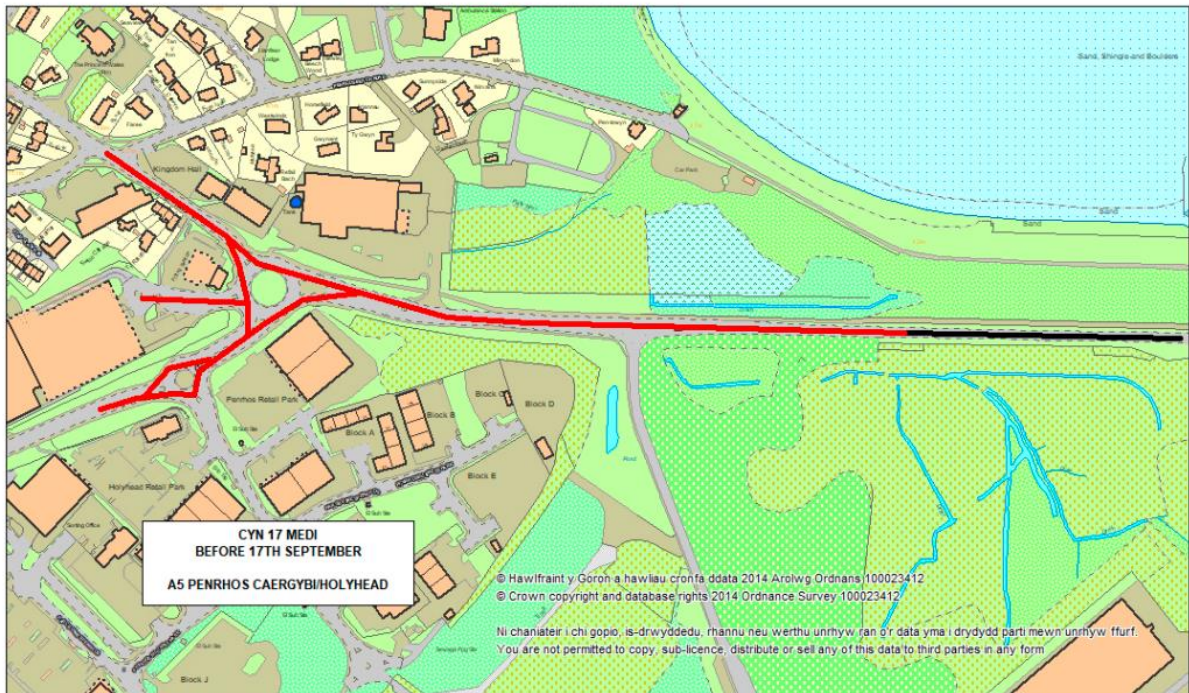
You are welcome to deal with the Council in Welsh or English. You will receive the same standard of service in both languages.



**CYNGOR SIR
YNYS MÔN**
ISLE OF ANGLESEY
COUNTY COUNCIL

CYNGOR SIR YNYS MÔN
ISLE OF ANGLESEY COUNTY COUNCIL
Swyddfa'r Sir
LLANGFNFI
Ynys Môn - Anglesey
LL77 7TW

**D/BLACK - CENEDLAETHOL/NATIONAL
COCH/RED - 30MYA/30MPH
MELYN/YELLOW - 20MYA/20MPH**



**CYNGOR SIR
YNYS MÔN**
ISLE OF ANGLESEY
COUNTY COUNCIL

CYNGOR SIR YNYS MÔN
ISLE OF ANGLESEY COUNTY COUNCIL
Swyddfa'r Sir
LLANGFNFI
Ynys Môn - Anglesey
LL77 7TW

**D/BLACK - CENEDLAETHOL/NATIONAL
COCH/RED - 30MYA/30MPH**

A4080 Brynsiencyn a'r A5 Gaerwen

RHYBUDD O FWRIAD / NOTICE OF PROPOSAL

GORCHYMYN CYNGOR SIR YNYS MONISLE OF ANGLESEY COUNTY COUNCIL (A4080 BRYNSIENCYN A A5 GAERWEN) (TERFYN CYFLYMDER 30MYA A DILEU CYFYNGIADAU) 202-

RHODDIR RHYBUDD TRWY HYN fed Cyngor Sir Ynys Môn/Isle of Anglesey County Council yn bwriadu gwneud Gorchymyn o dan adranau 82, 83, 84 a 124 a Rhan IV Atodlen 9 o Ddeddf Rheoli Trafnidiaeth Ffyrdd 1984.

Effaith y Gorchymyn arfaethedig fydd darparu terfyn cyflymder o 30 mya ar y darnau o ffordd a ddisgrifir yn Atodlen 1 i'r Rhybudd hwn a dileu cyfyngiadau ar y darn o ffordd a ddisgrifir yn Atodlen 2 i'r Rhybudd hwn.

Mae'n bosib i'r cyhoedd archwilio copi o'r Gorchymyn drafft, y Mapiau a'r Datganiad o Resymau'r Cyngor dros wneud y Gorchymyn yn Swyddfa'r Cyngor, Llangefni neu yn llyfrgell Porthaethwy a Llangefni (yn ystod oriau swyddfa arferol). Neu bydd copi o'r Gorchymyn drafft, Mapiau a'r Datganiad o Resymau'r Cyngor ar gael ar wefan y Cyngor www.ynysmon.gov.uk/gprchymynion-cyfeithiol neu fe ddanfonir copi caled o'r Gorchymyn a'r Mapiau drwy'r post ar gais ac am ddim os cysylltwch â Siwan.Jones@ynysmon.llyw.cymru neu 01248 752591 (yn ystod oriau swyddfa arferol).

Os dymunwch wrthwynebu'r Gorchymyn arfaethedig anfonwch eich gwrthwynebiad mewn ysgriften gan gynnwys eich rhesymau dros wneud hynny i'r isod erbyn: 2il Mehefin 2023. Bydd rhain ar gael i'w harchwilio gan y cyhoedd.

Os gwneir y Gorchymyn ar ôl ystyried yr holl sylwadau, caiff ei wneud ar neu ar ôl 17 Medi 2023 pan fydd y terfyn cyflymder rhagosoddedig o 20mya ar gyfer ffyrdd cyfyngedig wedi dod i rym.

ATODLEN 1

TERFYN CYFLYMDER 30 MYA

1.1 A4080 - DWYRAIN BRYNSIENCYN

O bwynt 83 metr o'r gyffordd â Ffordd Barras am bellter o 518 metr i gyfeiriad y gogledd-ddwyrain.

1.2 A4080 - GORLLEWIN BRYNSIENCYN

O bwynt 60 metr o'r gyffordd ger Rhos y Gaer am bellter o 223 metr i gyfeiriad y gogledd-ddwyrain.

ATODLEN 2

DILEU CYFYNGIADAU

A5 GAERWEN

Y darn o'r ffordd o bwynt 146 metr i'r dwyrain o'r gyffordd â Chapel Street, i bwynt 6 metr i'r dwyrain o'r gyffordd â Chapel Street.

CYNGOR SIR YNYS MONISLE OF ANGLESEY COUNTY COUNCIL (A4080 BRYNSIENCYN AND A5 GAERWEN) (30MPH SPEED LIMITS AND DE-RESTRICTION) ORDER 202-

NOTICE IS HEREBY GIVEN that Cyngor Sir Ynys Môn/Isle of Anglesey County Council proposes to make an Order under sections 82, 83, 84 and 124 and Part IV of Schedule 9 of the Road Traffic Regulation Act 1984.

The effect of the proposed Order will be to provide a 30mph speed limit on the lengths of road described in Schedule 1 to this Notice and a De-restriction on the length of road as described in Schedule 2 to this Notice.

It is possible to inspect a copy of the draft Order, Order Maps and Statement of the Council's reasons for making the Order at the Council Offices, Llangefni or at Menai Bridge and Llangefni library during normal office hours. Alternatively, a copy of the draft Order, Order Maps and Statement of Reasons is available on the Council's website www.anglesey.gov.uk/legal-orders or a hard copy of the Order and Order Maps will be sent in the post free of charge on request if you contact Siwan.Jones@ynysmon.llyw.cymru or 01248 752591 (during normal office hours).

If you wish to object to the proposed Order you should send your objection in writing specifying the ground thereof to the undersigned at the address specified by the: 2nd June 2023. These will be available for public inspection.

If the Order is made after taking all representations into account, it will be made on or after 17 September 2023 when the default speed limit of 20mph for restricted roads has come into force.

SCHEDULE 1

30 MPH SPEED LIMIT

1.1 A4080 – BRYNSIENCYN EAST

From a point 83 metres from the junction with Barras Road for a distance of 518 metres in a north easterly direction.

1.2 A4080 – BRYNSIENCYN WEST

From a point 60 metres of the junction near Rhos Y Gaer for a distance of 223 metres in a north easterly direction.

SCHEDULE 2

DE-RESTRICTION

A5 GAERWEN

The length of road from a point 146 metres east of the junction with Chapel Street, to a point 6 metres east of the junction with Chapel Street.

Dyddiedig10/05/2023..... Dated

Arwyddwyd*Robyn W. Jones*..... Signed

ROBYN W JONES
Rheolwr Gwasanaethau Cyfeithiol / Legal Services Manager
Swyddfeydd y Cyngor / Council Offices
Llangefni, Ynys Mon LL77 7TW

Am fwy o fanylion ynghlyn â'r uchod ffoniwch 01248 Llangefni, 752370.

For further information regarding the above, please telephone 01248 752370.

Croesi i chi ddallo gyda'r Cyngor yn Gymraeg neu'n Saesneg. Cewch yr un safon o wasanaeth yn y ddwy iaith.

You are welcome to deal with the Council in Welsh or English. You will receive the same standard of service in both languages.



CYNGOR SIR
 YNYS MÔN
 ISLE OF ANGLESEY
 COUNTY COUNCIL

CYNGOR SIR YNYS MÔN
 ISLE OF ANGLESEY COUNTY COUNCIL
 Swyddfa'r Sir
 LLANGFNÍ
 Ynys Môn - Anglesey
 LL77 7TW

A4080 Brynsiencyn Gorllewin
 A4080 Brynsiencyn West

Ar ôl 17 Medi
 After 17th September



CYNGOR SIR
YNYS MÔN
ISLE OF ANGLESEY
COUNTY COUNCIL

CYNGOR SIR YNYS MÔN
ISLE OF ANGLESEY COUNTY COUNCIL
Swyddfa'r Sir
LLANGFNII
Ynys Môn - Anglesey
LL77 7TW

A4080 Brynsiencyn Gorllewin
A4080 Brynsiencyn West

Cyn 17 Medi
Before 17th September



**CYNGOR SIR
YNYS MÔN
ISLE OF ANGLESEY
COUNTY COUNCIL.**

**CYNGOR SIR YNYS MÔN
ISLE OF ANGLESEY COUNTY COUNCIL**
Swyddfa'r Sir
LLANGFNI
Ynys Môn - Anglesey
LL77 7TW

DU/BLACK - CENEDLAETHOL/NATIONAL
MELYN/YELLOW - 20MYA/20MPH



**CYNGOR SIR
YNYS MÔN
ISLE OF ANGLESEY
COUNTY COUNCIL.**

**CYNGOR SIR YNYS MÔN
ISLE OF ANGLESEY COUNTY COUNCIL**
Swyddfa'r Sir
LLANGFNI
Ynys Môn - Anglesey
LL77 7TW

DU/BLACK - CENEDLAETHOL/NATIONAL
MELYN/YELLOW - 30MYA/30MPH

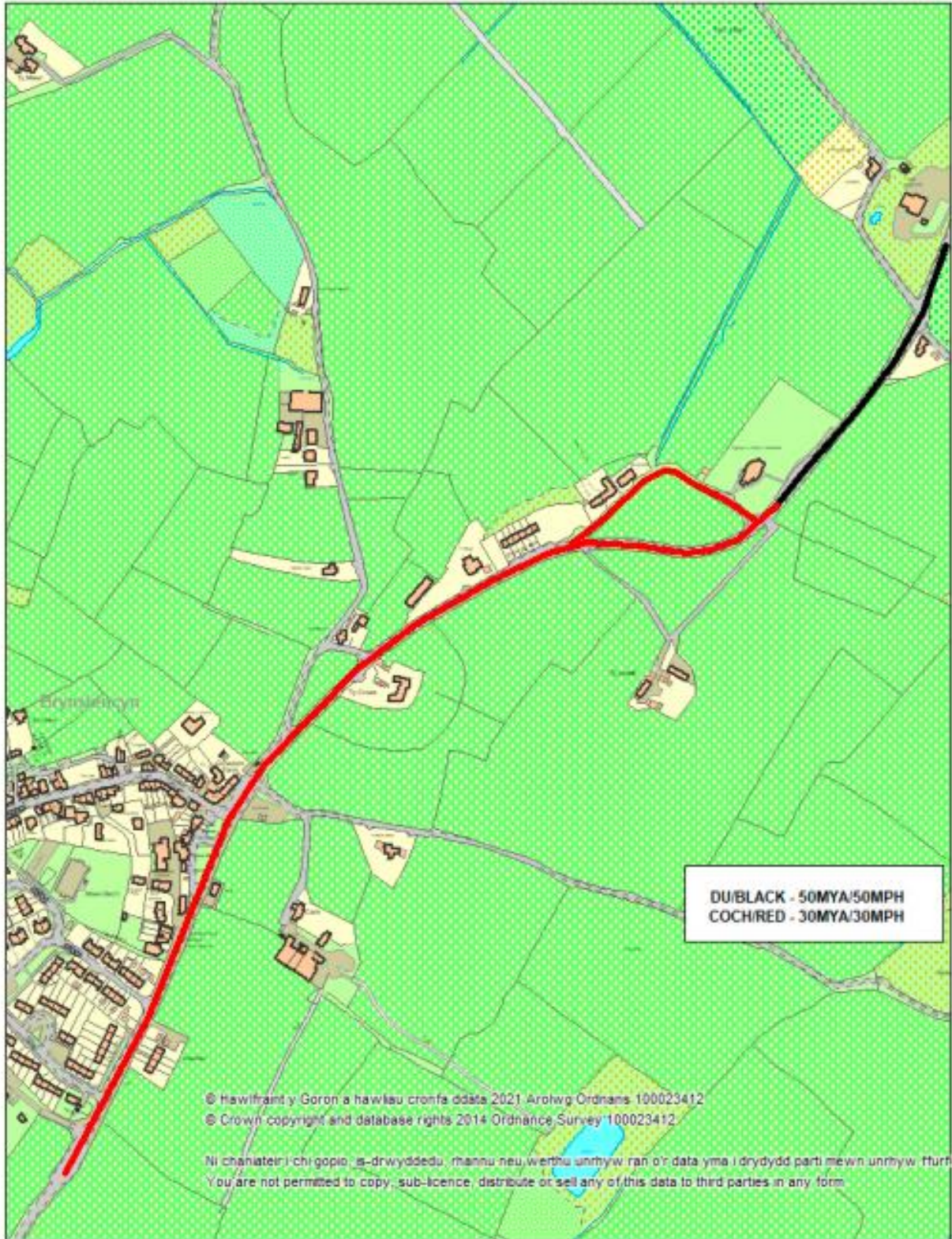


CYNGOR SIR
 YNYS MÔN
 ISLE OF ANGLESEY
 COUNTY COUNCIL

CYNGOR SIR YNYS MÔN
 ISLE OF ANGLESEY COUNTY COUNCIL
 Swyddfa'r Sir
 LLANGEFNI
 Ynys Môn - Anglesey
 LL77 7TW

A4080 Brynsiencyn Dwyrain
 A4080 Brynsiencyn East

Ar ôl 17 Medi
 After 17th September



**CYNGOR SIR
 YNYS MÔN
 ISLE OF ANGLESEY
 COUNTY COUNCIL**

**CYNGOR SIR YNYS MÔN
 ISLE OF ANGLESEY COUNTY COUNCIL**
 Swyddfa'r Sir
 LLANGEFNI
 Ynys Môn - Anglesey
 LL77 7TW

**A4080 Brynsiencyn Dwyrain
 A4080 Brynsiencyn East**

**Cyn 17 Medi
 Before 17th September**

A5 Caergeiliog a B4545 – Pont-rhyd-y-bont

RHYBUDD O FWRIAD / NOTICE OF PROPOSAL

GORCHYMYN CYNGOR SIR YNYS MON/ISLE OF ANGLESEY
COUNTY COUNCIL (A5 CAERGEILIOG A B4545 -
PONTRHYDYBONT) (TERFYN CYFLYMDER 30MYA) 202-

RHODDIR RHYBUDD TRWY HYN fod Cyngor Sir Ynys Môn/Isle of Anglesey County Council yn bwriadu gwneud Gorchymyn o dan adrannau 84(1) a (2) a 124 a Rhan IV Atodlen 9 o Ddeddf Rheoli Trafnidiaeth Ffyrdd 1984.

Effaith y Gorchymyn arfaethedig fydd darparu terfyn cyflymder o 30 mya ar y darnau o'r ffyrdd a ddisgrifir yn yr Atodleni i'r Rhybudd hwn.

Mae'n bosib i'r cyhoedd archwilio copi o'r Gorchymyn drafft, y Mapiau a'r Datganiad o resymau'r Cyngor dros wneud y Gorchymyn yn Swyddfa'r Cyngor, Llangedfn neu yn llyfrgell Caergybi (yn ystod oriau swyddfa arferol). Neu bydd copi o'r Gorchymyn drafft, Mapiau a'r Datganiad o Resymau'r Cyngor ar gael ar wefan y Cyngor www.ynysmon.gov.uk/gorchymynion-cyfreithiol neu fe ddanfonir copi caled o'r Gorchymyn a'r Mapiau drwy'r post ar gais ac am ddim os cysylltwch â Siwan.Jones@ynysmon.llyw.cymru neu 01248 752591 (yn ystod oriau swyddfa arferol).

Os dymunwch wrthwynebu'r Gorchymyn arfaethedig anfonwch eich gwrthwynebiad mewn ysgrifen gan gynnwys eich rhesymau dros wneud hynny i'r isod erbyn: **2il Mehefin 2023**. Bydd rhain ar gael i'w harchwilio gan y cyhoedd.

Os gwneir y Gorchymyn ar ôl ystyried yr holl sylwadau, caiff ei wneud ar neu ar ôl 17 Medi 2023 pan fydd y terfyn cyflymder rhagosodedig o 20mya ar gyfer ffyrdd cyfyngedig wedi dod i rym.

ATODLEN 1

TERFYN CYFLYMDER 30MYA ARFAETHEDIG

A5 CAERGEILIOG

O'r gyffordd â Ffordd Cymyran am bellter o 348 metr i gyfeiriad y gogledd-orllewin.

ATODLEN 2

TERFYN CYFLYMDER 30MYA ARFAETHEDIG

B4545 - PONTRHYDYBONT

O bwynt 126 metr i'r gogledd-ddwyrain o'r gyffordd â Copperfield Close am bellter o 573 metr i gyfeiriad y gogledd-ddwyrain

CYNGOR SIR YNYS MON/ISLE OF ANGLESEY COUNTY
COUNCIL (A5 CAERGEILIOG AND B4545 – FOUR MILE
BRIDGE) (30MPH SPEED LIMIT) ORDER 202-

NOTICE IS HEREBY GIVEN that Cyngor Sir Ynys Môn/Isle of Anglesey County Council proposes to make an Order under sections 84(1) and (2) and 124 and Part IV of Schedule 9 of the Road Traffic Regulation Act 1984.

The effect of the proposed Order will be to provide a 30mph speed limit on the lengths of roads described in the Schedules to this Notice.

It is possible to inspect a copy of the draft Order, Order Maps and Statement of the Council's reasons for making the Order at the Council Offices, Llangedfn or at Holyhead library during normal office hours. Alternatively, a copy of the draft Order, Order Maps and Statement of Reasons is available on the Council's website www.anglesey.gov.uk/legal-orders or a hard copy of the Order and Order Maps will be sent in the post free of charge on request if you contact Siwan.Jones@ynysmon.llyw.cymru or 01248 752591 (during normal office hours).

If you wish to object to the proposed Order you should send your objection in writing specifying the ground thereof to the undersigned at the address specified by the: **2nd June 2023**. These will be available for public inspection.

If the Order is made after taking all representations into account, it will be made on or after 17 September 2023 when the default speed limit of 20mph for restricted roads has come into force.

SCHEDULE 1

PROPOSED 30 MPH SPEED LIMIT

A5 CAERGEILIOG

From the junction with Cymyran Road for a distance of 348 metres in a north westerly direction.

SCHEDULE 2

PROPOSED 30 MPH SPEED LIMIT

B4545 – FOUR MILE BRIDGE

From a point 126 metres northeast of the junction with Copperfield Close for a distance of 573 metres in a north easterly direction.

Dyddiedig10/05/2023..... Dated

Arwyddwyd*Robyn W. Jones*..... Signed

ROBYN W JONES
Rheolwr Gwasanaethau Cyfreithiol / Legal Services Manager
Swyddfeydd y Cyngor / Council Offices
Llangedfn, Ynys Mon LL77 7TW

Am fwy o fanylion ynghlyn â'r uchod ffoniwch 01248 752370.

For further information regarding the above please telephone 01248 752370.

Croesi i chi ddelio gyda'r Cyngor yn Gymraeg neu'n Saesneg. Cewch yr un safon o wasanaeth yn y ddwy iaith.

You are welcome to deal with the Council in Welsh or English. You will receive the same standard of service in both languages.

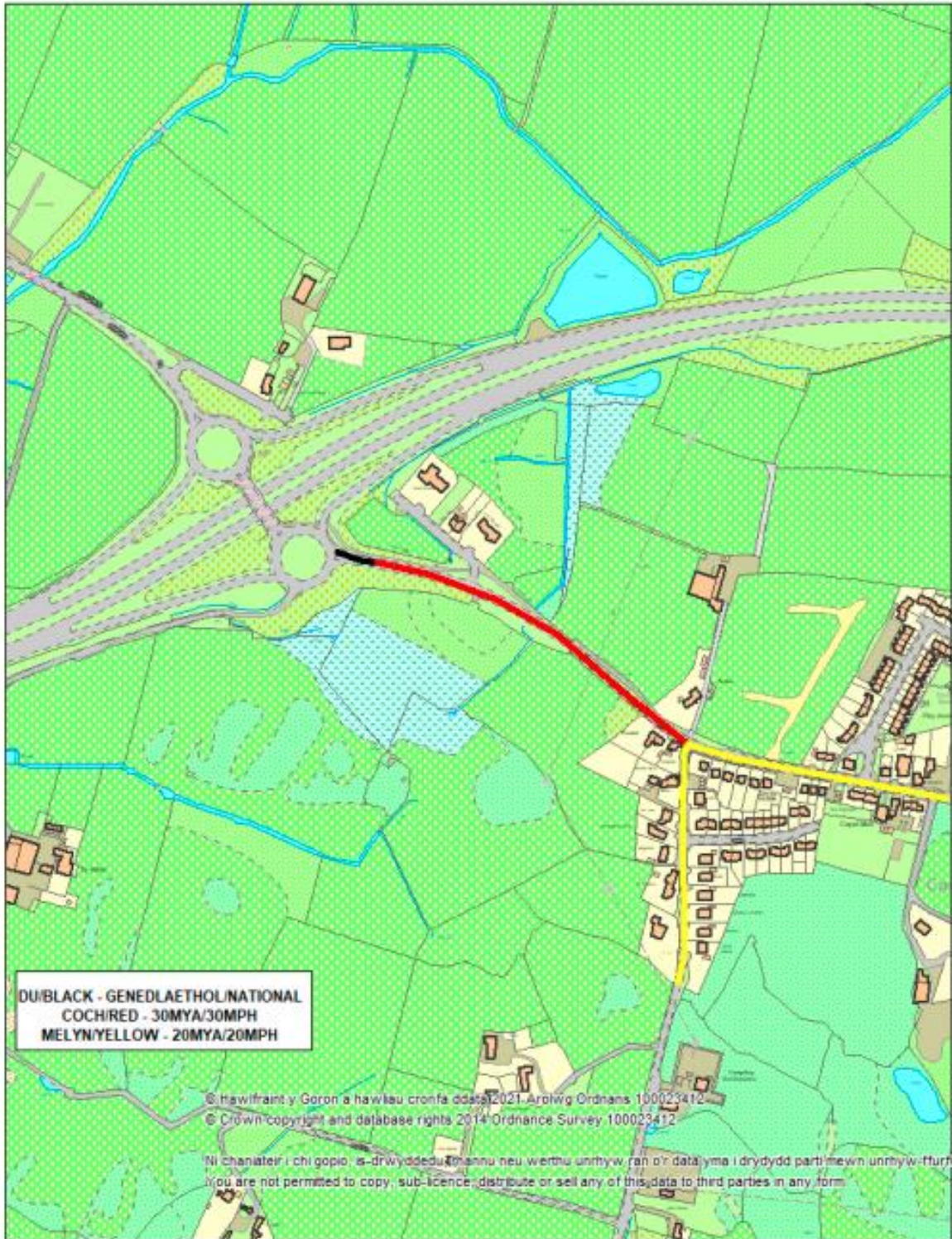


CYNGOR SIR
YNYS MÔN
ISLE OF ANGLESEY
COUNTY COUNCIL

CYNGOR SIR YNYS MÔN
ISLE OF ANGLESEY COUNTY COUNCIL
Swyddfa'r Sir
LLANGEFNI
Ynys Môn - Anglesey
LL77 7TW

A5 Caerelllog

Cyn 17 Medi
Before 17th September



DU/BLACK - GENEDLAETHOL/NATIONAL
 COCH/RED - 30MYA/30MPH
 MELYN/YELLOW - 20MYA/20MPH

© Hawlfraint y Goron a hawlau cronfa ddata ©2021 Arolwg Ordnans 100023412
 © Crown copyright and database rights 2014 Ordnance Survey 100023412

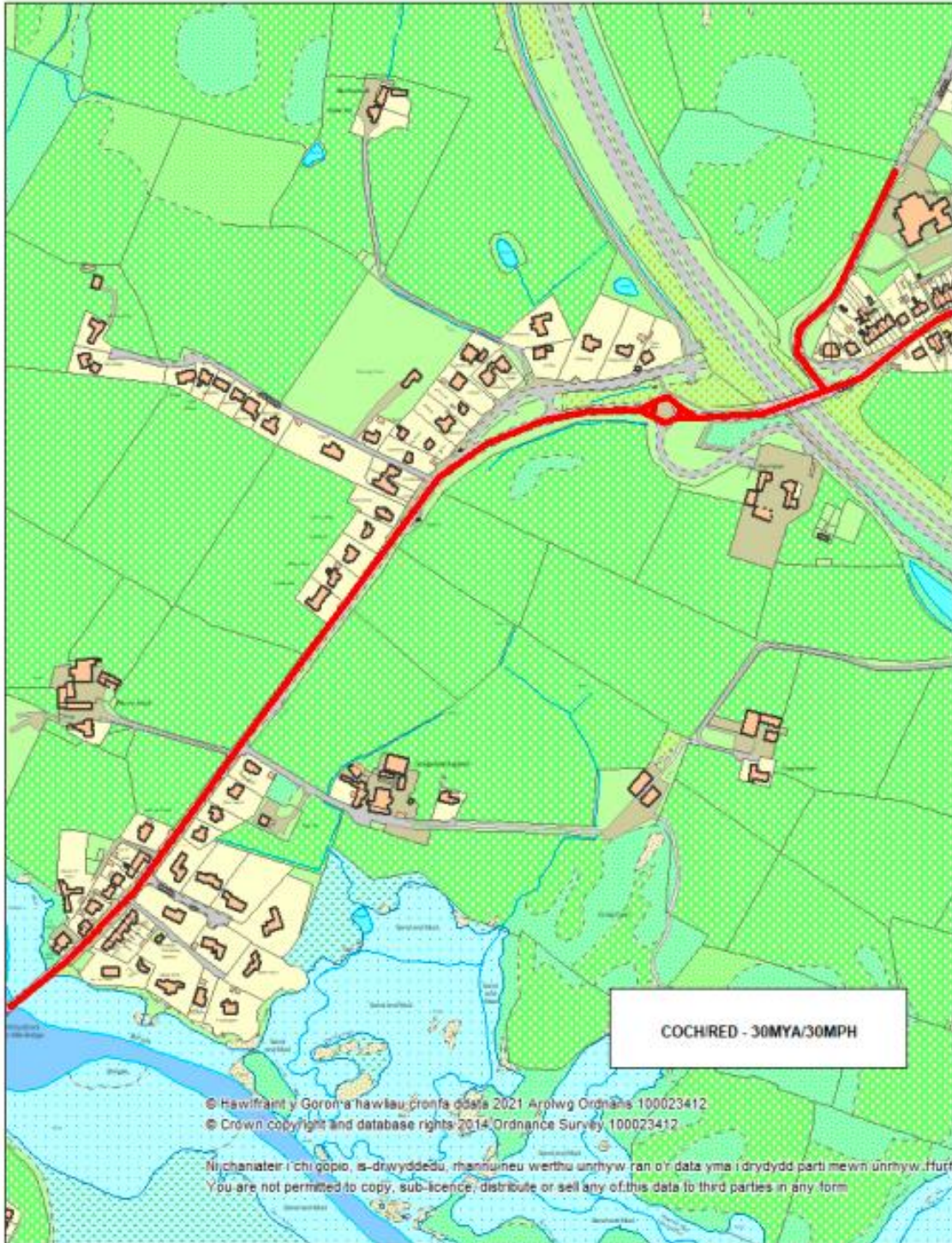
Ni chaniateir i chi gopio, is-dryddedu, rhannu neu werthu unrhyw ran o'r data yma i drydydd parti mewn unrhyw ffurf.
 You are not permitted to copy, sub-licence, distribute or sell any of this data to third parties in any form.



CYNGOR SIR
 YNYS MÔN
 ISLE OF ANGLESEY
 COUNTY COUNCIL

CYNGOR SIR YNYS MÔN
 ISLE OF ANGLESEY COUNTY COUNCIL
 Swyddfa'r Sir
 LLANGEFNI
 Ynys Môn - Anglesey
 LL77 7TW

A5 Caereiliog
 Ar ôl 17 Medi
 After 17th September

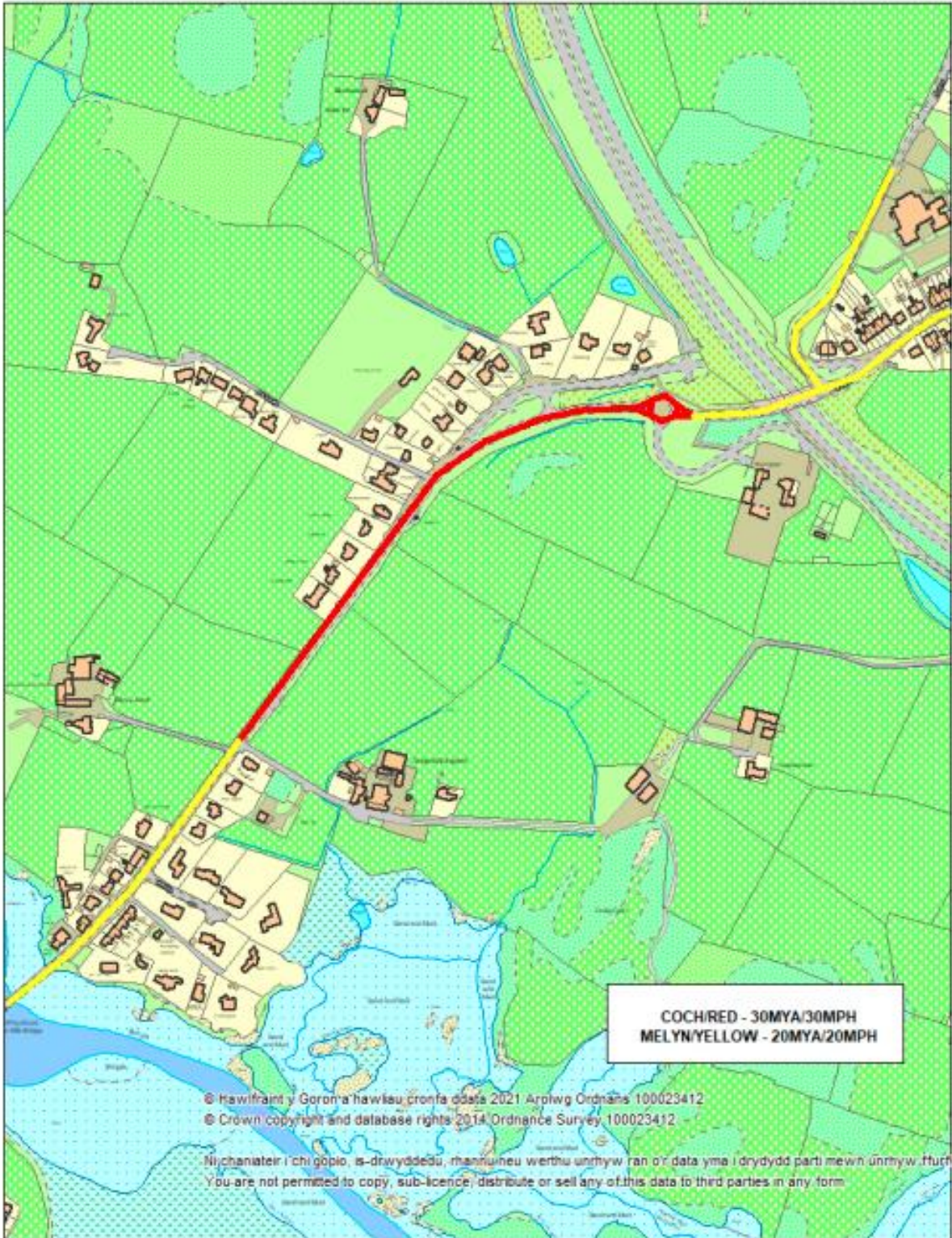


**CYNGOR SIR
 YNYS MÔN
 ISLE OF ANGLESEY
 COUNTY COUNCIL**

**CYNGOR SIR YNYS MÔN
 ISLE OF ANGLESEY COUNTY COUNCIL**
 Swyddfa'r Sir
 LLANGEFNI
 Ynys Môn - Anglesey
 LL77 7TW

B4545 Four Mile Bridge

**Cyn 17 Medi
 Before 17th September**



**CYNGOR SIR
YNYS MÔN
ISLE OF ANGLESEY
COUNTY COUNCIL.**

**CYNGOR SIR YNYS MÔN
ISLE OF ANGLESEY COUNTY COUNCIL**
Swyddfa'r Sir
LLANGEFNI
Ynys Môn - Anglesey
LL77 7TW

B4545 Four Mile Bridge

**Ar ôl 17 Medi
After 17th September**

Ffordd Gyswllt Llangefni

RHYBUDD O FWRIAD / NOTICE OF PROPOSAL

GORCHYMYN CYNGOR SIR YNYS MON/ISLE OF ANGLESEY COUNTY COUNCIL (FFORDD GYSWLLT LLANGEFNI) (TERFYN CYFLYMDER 30MYA) 202-

RHODDIR RHYBUDD TRWY HYN fod Cyngor Sir Ynys Môn/isle of Anglesey County Council yn bwriadu gwneud Gorchymyn o dan adrannau 84(1) a (2) a 124 a Rhan IV Atodlen 9 o Ddeddf Rheoli Trafnidiaeth Ffyrdd 1984.

Effaith y Gorchymyn arfaethedig fydd darparu terfyn cyflymder o 30 mya ar y darn o ffordd a ddisgrifir yn yr Atodlen i'r Rhybudd hwn.

Mae'n bosib i'r cyhoedd archwilio copi o'r Gorchymyn drafft, y Map a'r Datganiad o resymau'r Cyngor dros wneud y Gorchymyn yn Swyddfa'r Cyngor, Llangefni neu yn llyfrgell Llangefni (yn ystod oriau swyddfa arferol). Neu bydd copi o'r Gorchymyn drafft, Map a'r Datganiad o Resymau'r Cyngor ar gael ar wefan y Cyngor www.ynysmon.gov.uk/gorchymynion-cyfreithiol neu fe ddanfonir copi caled o'r Gorchymyn a'r Map drwy'r post ar gais ac am ddim os cysylltwch â Siwan.Jones@ynysmon.llyw.cymru neu 01248 752591 (yn ystod oriau swyddfa arferol).

Os dymunwch wrthwynebu'r Gorchymyn arfaethedig anfonwch eich gwrthwynebiad mewn ysgrifen gan gynnwys eich rhesymau dros wneud hynny i'r isod erbyn: **2il Mehefin 2023**. Bydd rhain ar gael i'w harchwilio gan y cyhoedd.

Os gwneir y Gorchymyn ar ôl ystyried yr holl sylwadau, caiff ei wneud ar neu ar ôl 17 Medi 2023 pan fydd y terfyn cyflymder rhagosodedig o 20mya ar gyfer ffyrdd cyfyngedig wedi dod i rym.

ATODLEN

TERFYN CYFLYMDER 30MYA ARFAETHEDIG

FFORDD GYSWLLT LLANGEFNI

O bwynt 180 metr i'r gorllewin o'r gylchfan gyda Lôn Talwrn B5109 am bellter o 2324 metr i gyfeiriad y de-orllewin.

Dyddiedig10/05/2023..... Dated

Arwyddwyd*Robyn W. Jones*.....Signed

ROBYN W JONES
Rheolwr Gwasanaethau Cyfreithiol / Legal Services Manager
Swyddfeydd y Cyngor / Council Offices
Llangefni, Ynys Mon LL77 7TW

Am fwy o fanylion ynghlyn â'r uchod ffoniwch 01248 752370.

Croesi i chi ddellio gyda'r Cyngor yn Gymraeg neu'n Saesneg. Cewch yr un safon o wasanaeth yn y ddwy iaith.

CYNGOR SIR YNYS MON/ISLE OF ANGLESEY COUNTY COUNCIL (LLANGEFNI LINK ROAD) (30MPH SPEED LIMIT) ORDER 202-

NOTICE IS HEREBY GIVEN that Cyngor Sir Ynys Môn/isle of Anglesey County Council proposes to make an Order under sections 84(1) and (2) and 124 and Part IV of Schedule 9 of the Road Traffic Regulation Act 1984.

The effect of the proposed Order will be to provide a 30mph speed limit on the length of road described in the Schedule to this Notice.

It is possible to inspect a copy of the draft Order, Order Map and Statement of the Council's reasons for making the Order at the Council Offices, Llangefni or at Llangefni library during normal office hours. Alternatively, a copy of the draft Order, Order Map and Statement of Reasons is available on the Council's website www.anglesey.gov.uk/legal-orders or a hard copy of the Order and Order Map will be sent in the post free of charge on request if you contact Siwan.Jones@ynysmon.llyw.cymru or 01248 752591 (during normal office hours).

If you wish to object to the proposed Order you should send your objection in writing specifying the ground thereof to the undersigned at the address specified by the: **2nd June 2023**. These will be available for public inspection.

If the Order is made after taking all representations into account, it will be made on or after 17 September 2023 when the default speed limit of 20mph for restricted roads has come into force.

SCHEDULE

PROPOSED 30 MPH SPEED LIMIT

LLANGEFNI LINK ROAD

From a point 180 metres west of the roundabout with Lôn Talwrn B5109 for a distance of 2324 metres in a south westerly direction.



Llangefni Link Road

N Scale: 1:10000

EITHRIAD ARFAETHEDIG O 20MYA
/PROPOSED 20MPH EXCEPTION
LLANGEFNI LINK ROAD



Printed on: 2022-10-24 11:06:25 by NXHHT@IOACC © Cyngor Sir Ynys Môn Isle of Anglesey County Council
© Hawffraint y Goron a hawliau cronfa ddata 2022 Arolwg Ordnans 100023412. Ni chaniateir i chi gopio,
is-drwyddedu, rhannu neu werthu unrhyw ran o'r data yma i drydydd parti mewn unrhyw ffurf. © Crown
copyright and database rights 2022 Ordnance Survey 100023412. You are not permitted to copy, sub-



Llangefni Link Road

N Scale: 1:10000

EITHRIAD ARFAETHEDIG O 20MYA
/PROPOSED 20MPH EXCEPTION
LLANGEFNI LINK ROAD



Printed on: 2022-10-24 11:06:25 by NXHHT@IOACC © Cyngor Sir Ynys Môn Isle of Anglesey County Council
© Hawlfraint y Goron a hawliau cronfa ddata 2022 Arolwg Ordnans 100023412. Ni chaniateir i chi gopïo, is-drwyddedu, rhannu neu werthu unrhyw ran o'r data yma i drydydd parti mewn unrhyw ffurf. © Crown copyright and database rights 2022 Ordnance Survey 100023412. You are not permitted to copy, sub-

Llanfairpwll a Phorthaethwy

RHYBUDD O FWRIAD / NOTICE OF PROPOSAL

GORCHYMYN CYNGOR SIR YNYS MÔN/ISLE OF ANGLESEY COUNTY COUNCIL (LLANFAIRPWLLGWYNGYLL A PORTHAEHWY) (TERFYN CYFLYMDER 30MYA A 40MYA) 2023

RHOODIR RHYBUDD TRWY HYN fod Cyngor Sir Ynys Môn/Isle of Anglesey County Council yn bariadu gwneud Gorchymyn o dan adranau 84(1) a (2) a 124 a Rhan IV Atodlen 9 o Ddeddf Rheoli Trafnidiaeth Ffyrdd 1984.

Effaith y Gorchymyn arfaethedig fydd darparu terfyn cyflymder o 30 mya ar y darnau o ffordd a ddisgrifir yn Atodlen 1 i'r Rhybudd hwn a therfyn cyflymder o 40 mya ar y darnau o'r ffordd a ddisgrifir yn Atodlen 2 i'r Rhybudd hwn.

Mae'n bosib i'r cyhoedd archwilio copi o'r Gorchymyn drafft, y Mapiau a'r Datganiad o resymau'r Cyngor dos wneud y Gorchymyn yn Swyddfa'r Cyngor, Llangefni neu yn llyfrgell Phorthaethwy (yn ystod oriau swyddfa arferol). Neu bydd copi o'r Gorchymyn drafft, Mapiau a'r Datganiad o Resymau'r Cyngor ar gael ar wefan y Cyngor www.ynysmon.gov.uk/gorchymynion-cyfreithiol neu fe ddanfonir copi caled o'r Gorchymyn a'r Mapiau drwy'r post ar gais ac am ddim os cysylltwch â Siwan.Jones@ynysmon.llyw.cymru neu 01248 752591 (yn ystod oriau swyddfa arferol).

Os dymunwch wrthwynebu'r Gorchymyn arfaethedig anfonwch eich gwrthwynebiad mewn ysgrifen gan gynnwys eich rhesymau dros wneud hynny i'r isod erbyn: 2il Mehefin 2023. Bydd rhain ar gael i'w harchwilio gan y cyhoedd.

Os gwneir y Gorchymyn ar ôl ystyried yr holl sylwadau, caiff ei wneud ar neu ar ôl 17 Medi 2023 pan fydd y terfyn cyflymder rhagosoddedig o 20mya ar gyfer ffyrdd cyfyngedig wedi dod i rym.

ATODLEN 1

TERFYN CYFLYMDER 30 MYA

1.1 A545 – LŌN CADNANT, PORTHAEHWY

O'r gyffordd â Ait Cichle am bellter o 600m i gyfeiriad y de-orllewin.

1.2 A4080 – FFORDD BRYSIENCYN, LLANFAIRPWLLGWYNGYLL

O'r gyffordd â'r A5 am bellter o 370m i gyfeiriad y de-orllewin.

ATODLEN 2

TERFYN CYFLYMDER 40 MYA

A5 – FFORDD CAERGYBI, LLANFAIRPWLLGWYNGYLL

2.1 O bwynt 195m gorllewin o'r gyffordd â Lôn Pont Rowy, am bellter o 302 metr i gyfeiriad y de-ddwyrain.

2.2 O gyffordd yr A5 gyda Lôn Pont Rowy am bellter o 10m i gyfeiriad y de.

2.3 O'r ffordd slip A55 i gyffordd yr A5 am bellter o 18m i gyfeiriad y de.

CYNGOR SIR YNYS MÔN/ISLE OF ANGLESEY COUNTY COUNCIL (LLANFAIRPWLLGWYNGYLL AND MENAI BRIDGE) (30MPH AND 40MPH SPEED LIMIT) ORDER 2023

NOTICE IS HEREBY GIVEN that Cyngor Sir Ynys Môn/Isle of Anglesey County Council proposes to make an Order under sections 84(1) and (2) and 124 and Part IV of Schedule 9 of the Road Traffic Regulation Act 1984.

The effect of the proposed Order will be to provide a 30mph speed limit on the lengths of road described in Schedule 1 to this Notice and a 40mph speed limit on the lengths of road as described in Schedule 2 to this Notice.

It is possible to inspect a copy of the draft Order, Order Maps and Statement of the Council's reasons for making the Order at the Council Offices, Llangefni or at Menai Bridge library during normal office hours. Alternatively, a copy of the draft Order, Order Maps and Statement of Reasons is available on the Council's website www.anglesey.gov.uk/legal-orders or a hard copy of the Order and Order Maps will be sent in the post free of charge on request if you contact Siwan.Jones@ynysmon.llyw.cymru or 01248 752591 (during normal office hours).

If you wish to object to the proposed Order you should send your objection in writing specifying the ground thereof to the undersigned at the address specified by the: 2nd June 2023. These will be available for public inspection.

If the Order is made after taking all representations into account, it will be made on or after 17 September 2023 when the default speed limit of 20mph for restricted roads has come into force.

SCHEDULE 1

30 MPH SPEED LIMIT

1.1 A545 – CADNANT ROAD, MENAI BRIDGE

From the junction with Cichle Hill for a distance of 600m in a south westerly direction.

1.2 A4080 – BRYNSIENCYN ROAD, LLANFAIRPWLLGWYNGYLL

From the junction with the A5 for a distance of 370m in a south westerly direction.

SCHEDULE 2

40 MPH SPEED LIMIT

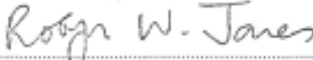
A5 – HOLYHEAD ROAD, LLANFAIRPWLLGWYNGYLL

2.1 From a point 195m west of the junction with Lôn Pont Rowy, for a distance of 302 metres in a south easterly direction.

2.2 From the A5 junction with Lôn Pont Rowy for a distance of 10m in a southerly direction.

2.3 From the A55 slip road to the A5 junction for a distance of 18m in a southerly direction.

Dyddiedig 10/05/2023 Dated

Anyddwyd  Signed

ROBYN W JONES
Rheolwr Gwasanaethau Cyfreithiol / Legal Services Manager
Swyddfeydd y Cyngor / Council Offices
Llangefni, Ynys Môn LL77 7TW

Am fwy o fanylion ynghylch â'r uchod ffoniwch 01248 Llangefni, 752370.

For further information regarding the above, please telephone 01248 752370.

Croesi i chi ddalo gyda'r Cyngor yn Gymraeg neu'n Saesneg. Cewch yr un safon o wasanaeth yn y ddwy iaith.

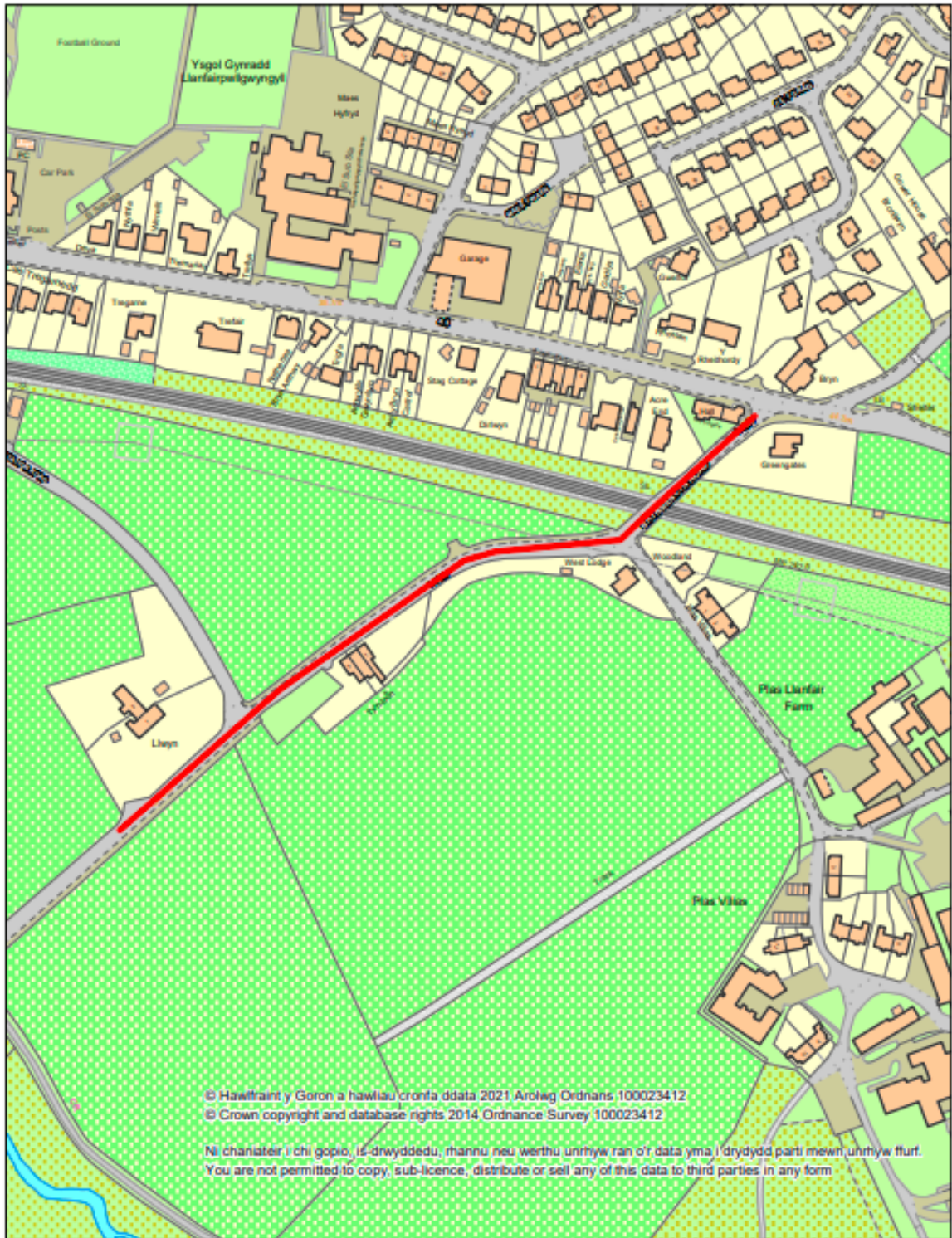
You are welcome to deal with the Council in Welsh or English. You will receive the same standard of service in both languages.



CYNGOR SIR
 YNYS MÔN
 ISLE OF ANGLESEY
 COUNTY COUNCIL

CYNGOR SIR YNYS MÔN
 ISLE OF ANGLESEY COUNTY COUNCIL
 Swyddfa'r Sir
 LLANGEFNI
 Ynys Môn - Anglesey
 LL77 7TW

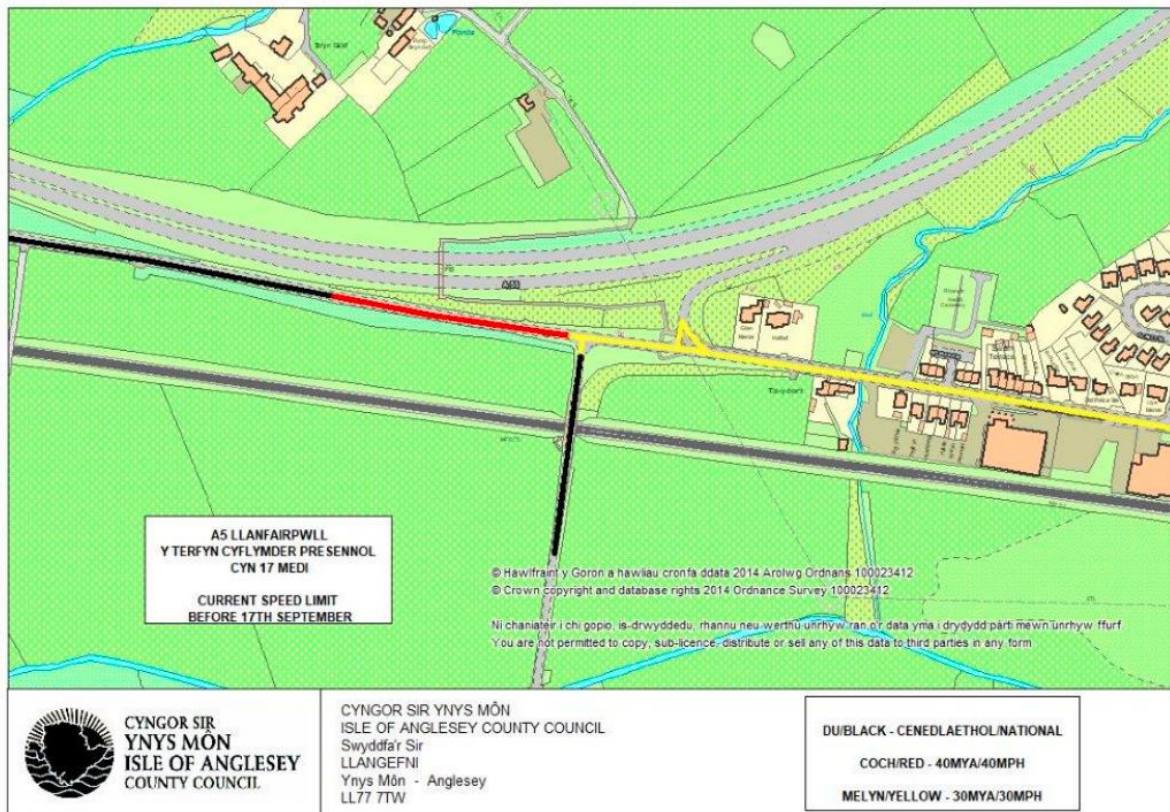
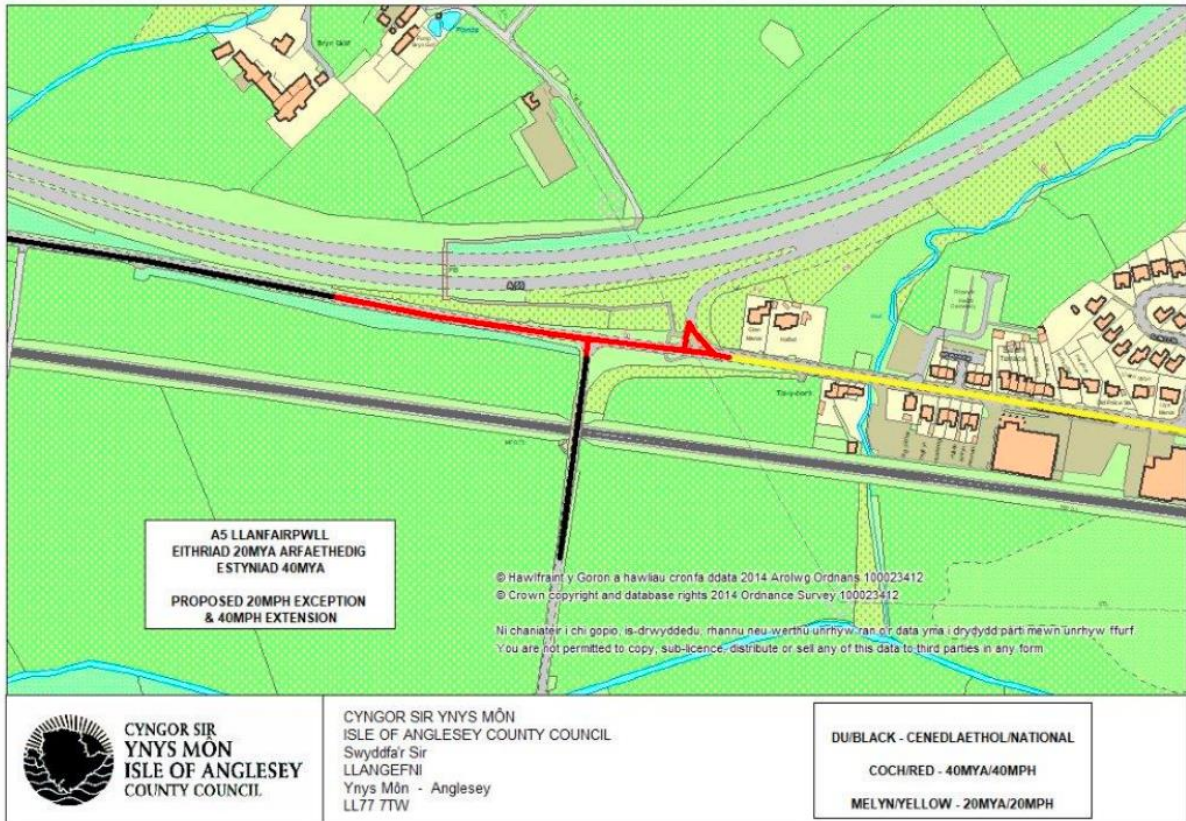
EITHRIAD ARFAETHEDIG O 20MYA/
 PROPOSED 20MPH EXCEPTION
 A545 CADNANT BRIDGE



**CYNGOR SIR
 YNYS MÔN
 ISLE OF ANGLESEY
 COUNTY COUNCIL**

**CYNGOR SIR YNYS MÔN
 ISLE OF ANGLESEY COUNTY COUNCIL
 Swyddfa'r Sir
 LLANGFN
 Ynys Môn - Anglesey
 LL77 7TW**

**EITHRIAD ARFAETHEDIG O 20MYA/
 PROPOSED 20MPH EXCEPTION
 A4080 LLANFAIRPWLL**



A5 Gwalchmai

RHYBUDD O FWRIAD / NOTICE OF PROPOSAL

**GORCHYMYN CYNGOR SIR YNYS MON/ISLE OF
ANGLESEY COUNTY COUNCIL (A5 GWALCHMAI) (TERFYN
CYFLYMDER 30MYA) 202-**

RHODDIR RHYBUDD TRWY HYN fod Cyngor Sir Ynys Môn/Isle of Anglesey County Council yn bwriadu gwneud Gorchymyn o dan adrannau 84(1) a (2) a 124 a Rhan IV Atodlen 9 o Ddeddf Rheoli Trafnidiaseth Fyrrdd 1984.

Effaith y Gorchymyn arfaethedig fydd darparu terfyn cyflymder o 30 mya ar y darn o ffordd a ddisgrifir yn yr Atodlen i'r Rhybudd hwn.

Mae'n bosib i'r cyhoedd archwilio copi o'r Gorchymyn drafft, y Mapiau a'r Datganiad o resymau'r Cyngor dros wneud y Gorchymyn yn Swyddfa'r Cyngor, Llangefni neu yn llyfrgell Rhosneigr (yn ystod oriau swyddfa arferol). Neu bydd copi o'r Gorchymyn drafft, Mapiau a'r Datganiad o Resymau'r Cyngor ar gael ar wefan y Cyngor www.ynysmon.gov.uk/gorchymynion-cyfreithiol neu fe ddanfônir copi caled o'r Gorchymyn a'r Mapiau drwy'r post ar gais ac am ddim os cysylltwch â SiwanJones@ynysmon.llyw.cymru neu 01248 752591 (yn ystod oriau swyddfa arferol).

Os dymunwch wrthwynebu'r Gorchymyn arfaethedig anfonwch eich gwrthwynebiad mewn ysgrifen gan gynnwys eich rhesymau dros wneud hynny i'r isod erbyn: 2il Mehefin 2023. Bydd rhain ar gael i'w harchwilio gan y cyhoedd.

Os gwneir y Gorchymyn ar ôl ystyried yr holl sylwadau, caiff ei wneud ar neu ar ôl 17 Medi 2023 pan fydd y terfyn cyflymder rhagosodedig o 20mya ar gyfer fyrrdd cyfyngedig wedi dod i rym.

ATODLEN

TERFYN CYFLYMDER 30MYA ARFAETHEDIG

A5 GWALCHMAI

O'r gyffordd ger Rose Cottage am bellter o 322 metr i gyfeiriad y gogledd orllewin.

Dyddiedig10/05/2023..... Dated

Anwyddwyd*Robyn W. Jones*.....Signed

ROBYN W JONES

Rheolwr Gwasanaethau Cyfreithiol / Legal Services Manager
Swyddfeydd y Cyngor / Council Offices
Llangefni, Ynys Mon LL77 7TW

Am fwy o fanylion ynghlyn â'r uchod ffoniwch 01248 752370.

Croesi i chi ddelio gyda'r Cyngor yn Gymraeg neu'n Saesneg. Cewch yr un safon o wasanaeth yn y ddwy iaith.

**CYNGOR SIR YNYS MON/ISLE OF ANGLESEY COUNTY
COUNCIL (A5 GWALCHMAI) (30MPH SPEED LIMIT)
ORDER 202-**

NOTICE IS HEREBY GIVEN that Cyngor Sir Ynys Môn/Isle of Anglesey County Council proposes to make an Order under sections 84(1) and (2) and 124 and Part IV of Schedule 9 of the Road Traffic Regulation Act 1984.

The effect of the proposed Order will be to provide a 30mph speed limit on the length of road described in the Schedule to this Notice.

It is possible to inspect a copy of the draft Order, Order Maps and Statement of the Council's reasons for making the Order at the Council Offices, Llangefni or at Rhosneigr library during normal office hours. Alternatively, a copy of the draft Order, Order Maps and Statement of Reasons is available on the Council's website www.anglesey.gov.uk/legal-orders or a hard copy of the Order and Order Maps will be sent in the post free of charge on request if you contact SiwanJones@ynysmon.llyw.cymru or 01248 752591 (during normal office hours).

If you wish to object to the proposed Order you should send your objection in writing specifying the ground thereof to the undersigned at the address specified by the: 2nd June 2023. These will be available for public inspection.

If the Order is made after taking all representations into account, it will be made on or after 17 September 2023 when the default speed limit of 20mph for restricted roads has come into force.

SCHEDULE

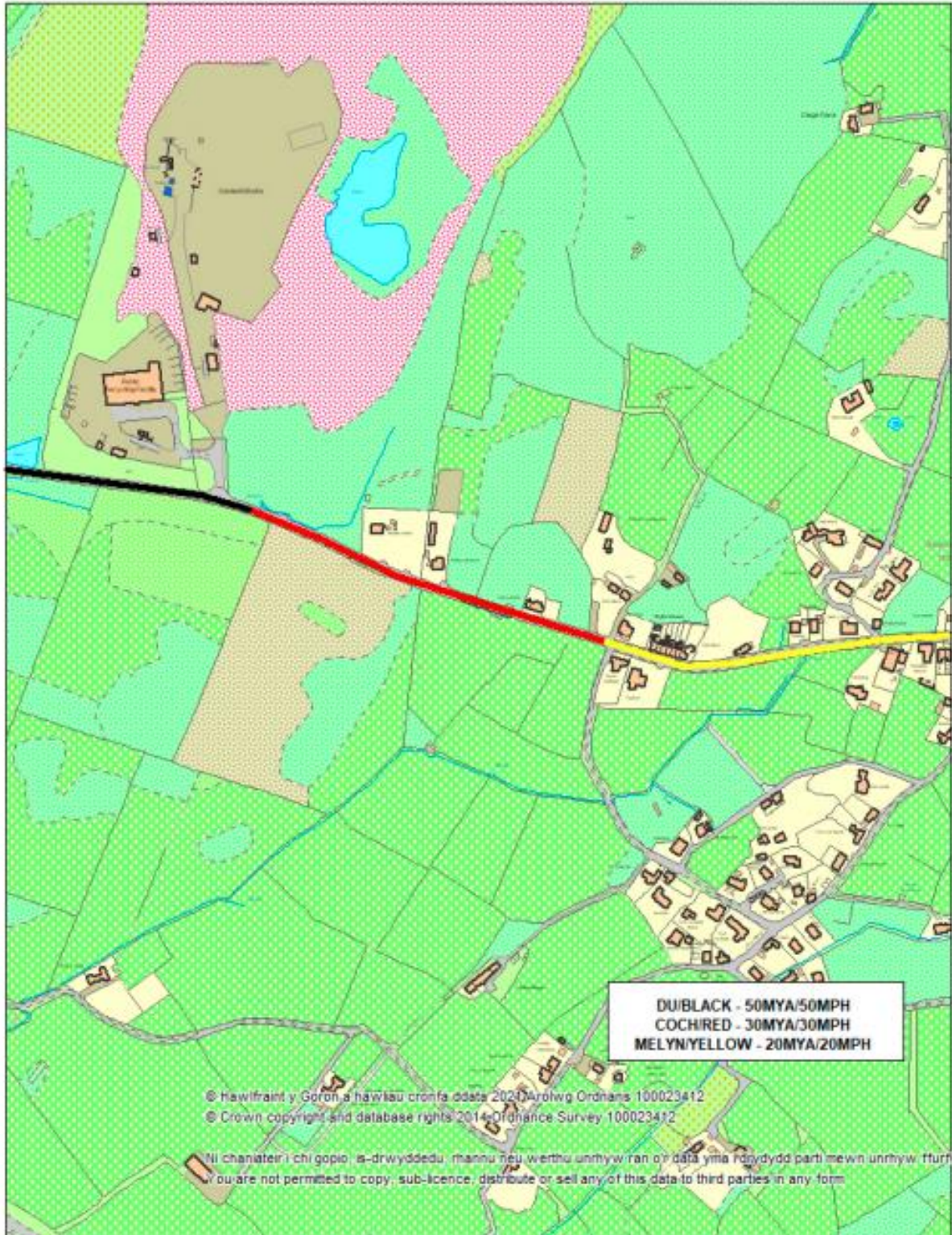
PROPOSED 30 MPH SPEED LIMIT

A5 GWALCHMAI

From the junction near Rose Cottage for a distance of 322 metres in a north westerly direction.

For further information regarding the above please telephone 01248 752370.

You are welcome to deal with the Council in Welsh or English. You will receive the same standard of service in both languages.

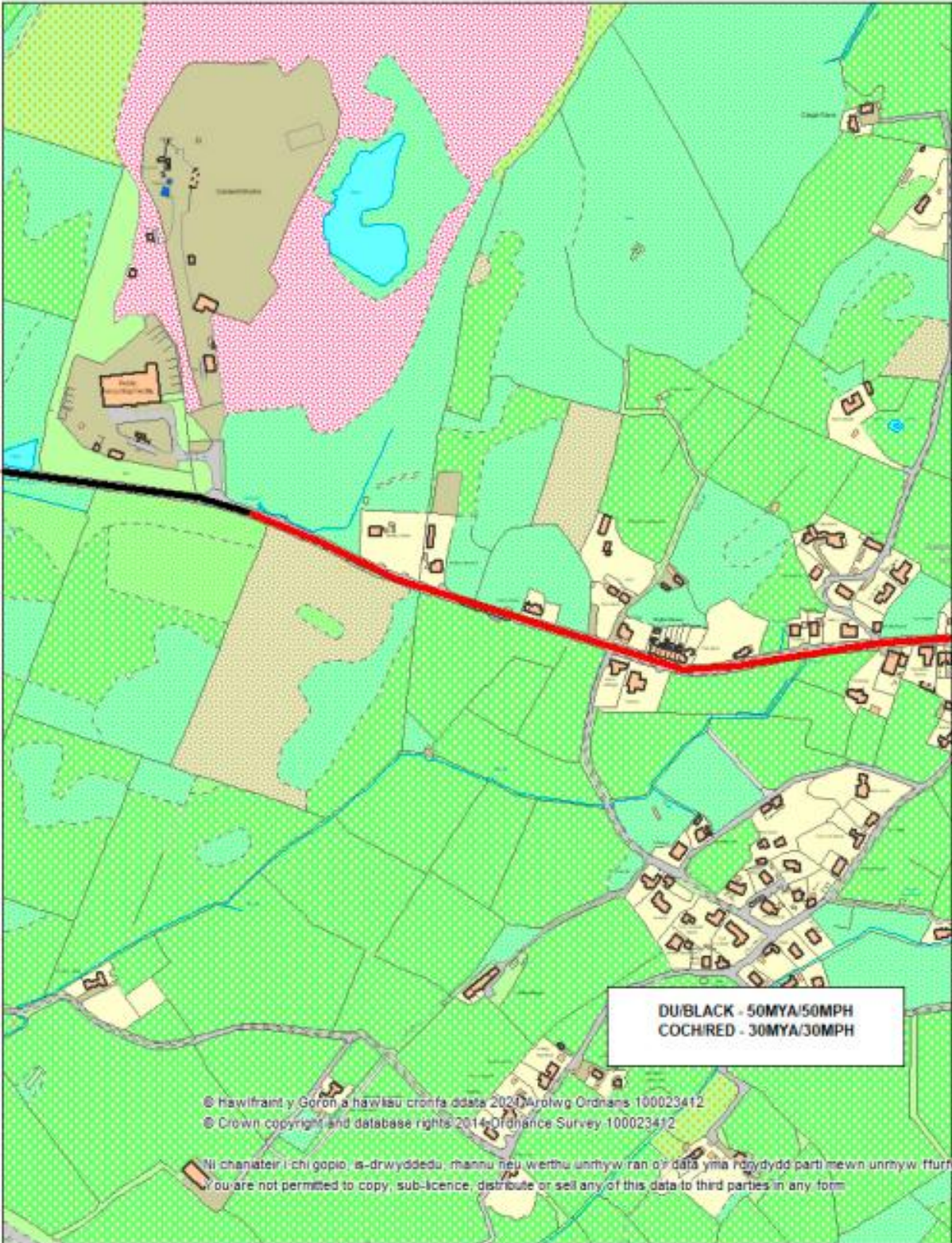


**CYNGOR SIR
 YNYS MÔN**
**ISLE OF ANGLESEY
 COUNTY COUNCIL**

CYNGOR SIR YNYS MÔN
ISLE OF ANGLESEY COUNTY COUNCIL
 Swyddfa'r Sir
 LLANGFNÍ
 Ynys Môn - Anglesey
 LL77 7TW

A5 Gwalchmai

Ar ôl 17 Medi
After 17th September



**CYNGOR SIR
YNYS MÔN
ISLE OF ANGLESEY
COUNTY COUNCIL**

**CYNGOR SIR YNYS MÔN
ISLE OF ANGLESEY COUNTY COUNCIL**
Swyddfa'r Sir
LLANGFNÍ
Ynys Môn - Anglesey
LL77 7TW

A5 Gwalchmai
Cyn 17 Medi
Before 17th September

Atodiad 2

Copi o wrthwynebiadau a sylwadau a dderbyniwyd yn ystod y cam hysbysebu

Sylw/Gwrthwynebiad 1

Good Morning,

This 20mph policy comes from the present Labour controlled, car-hating, Governing Party in Cardiff - where it is the stated policy - of our DEPUTY (only) Minister for Climate Change (note NO proper Transport Minister considering the Welsh Economy, road improvements, or tourism) - to get people out of their cars, walking or cycling. This Deputy Minister does not seem to have the sense to realise that North Wales, and Anglesey, are NOT NOT NOT areas where this is practical.

It is good to see that you are giving thought to some non 20mph areas, but could you bear in mind -

People living on Anglesey and having to work well into the mainland, cannot be expected to travel great distances at 20 mph. This policy, especially if there are more cyclists on the roads, trying to avoid the multitude of pot-holes, makes these areas MORE hazardous - due to increased tail-gating, more speedo watching, so lower attention to the road, frustrated drivers are less safe AND cyclists need not stick to 20mph, NOR have insurance, or any financial penalties for carelessness.

Hoteliers on Anglesey have been saying that their guests are finding the congested roads to get to Wales too frustrating, so they are losing business to Scotland, for similar scenery without the traffic hassle, or abroad for the better weather. Holiday makers will not take kindly to souvenirs of motoring in Wales being tickets for SPEEDING at 23mph.

Although we are retired and live near Colwyn Bay, from September, we will be avoiding nearly all the hazardous 20mph areas, by only going to places that are very near the A55, eg, not travelling from Llandulas, all through Old Colwyn and Colwyn Bay, to Mochdre at max 20mph. It will be necessary to avoid the towns on the A548 from Abergele to Chester way - so we will be spending a lot of our money over the English border, despite the extra car miles, or online only.

We love Anglesey, but if long stretches of 20mph areas, repeated long at every village, are what Anglesey wants, we will enjoy ourselves on lovely Wirral instead.

It would be wonderful if Anglesey told metropolitan Cardiff that tourism + locals leisure motoring and spending + the Freeport and the Anglesey economy are important, SO persecution of motorists, (plenty of votes there) on MAM CYMRU, will cease and free flowing traffic will be made a priority, here and on the journey to North Wales.

[REDACTED]

Sylw/Gwrthwynebiad 2

I wish to object against this proposal for the following reasons:-

1. I drive from Mynydd Bodafon to Holyhead for work 5 days per week. This currently is a 40 minute drive each way. If this proposal is passed then my journey time will increase, meaning my engine will be on for longer and as such will see an increase in fuel usage, this will have a determental effect on the environment due to emissions and cost. Also this will increase the amount of wear and tear of my vehicle.
2. It is ridiculous to expect local tax payers to meet the cost of implementing this scheme in the current economic climate.
3. I fear day trippers visiting the island, a main source of income for Anglesey will be put off and visit and spend their cash elsewhere.

Regards

[REDACTED]

Sylw/Gwrthwynebiad 3

What a complete and utter joke.

It already takes forever to get from one part of the island to the other. All this is going to do is slow things down even more.

Fair play, I accept the possible use of 20mph limits outside schools etc, but to blanket the entire place, (Wales), with a reduction of the 30mph limit to 20mph is just backwards.

Why not go all the way, and bring back the walker with the red flag in front of cars.

Just another example of a half baked idea by the so called government of Wales.



Sylw/Gwrthwynebiad 4

To whom this may concern

I am a resident of Anglesey and have lived here my entire life. I am now 31 years old and have never seen a issue with the 30mph limit. I strongly object to the proposal of changing the 30mph limit to 20mph there is simply no point and has no sense behind it.

Firstly has anyone considered the huge cost changing all the signs from 30 to 20? Great use of funds....

I am unfortunately unaware when the 30mph limit was introduced, but for arguments sake let's say it was the 1970s. Back then breaks where the traditional drum type usually binded with asbestos. Car and bike breaks have come along way since then with majority of cars on the road now disc's. Not only that but the technology used in modern day vehicles means that they can usually see a hazard before the driver does.

Has anyone thought of how this effects emergency services? They have a 20mph allowance on top of the speed limit. The Welsh government are now effectively extending response times arguably putting more life's at risk!

I could see the benefits of having this idea outside a area with large foot fall such as outside a school between 7am and 5pm. Or on a high street but driving through a sleepy village i don't see the need.

The funds could be better used to educate in schools or put more cross walks in the areas! Bring back the old TV commercials that show people how to cross the roads.

I think the government need to look more into this idea and not just do it to spark headlines with "Wales the fist in the world" sometimes no press is better.

Diolch

Sylw/Gwrthwynebiad 5

i have seen the locations that are going to reduce the speed limit from 30mph to 20 mph i presume to save lives do could you enlighten us with the serious accidents, injury and deaths that have occurred on these section of roads that have been chosen in the last 5 yrs.

also air pollution comes in to this as well, to do 20mph the cars and other road users will have to change down a gear or two thus producing more pollution in buit up areas.

i'm all for road safety and saving lives but reducing speed limit from 30 to 20mph except outside schools during school opening hours will not make much difference except in the bank balance of stay safe police vans.

i await your response.

██████████

Sylw/Gwrthwynebiad 6

Dear Robyn Jones

I write regarding the list of proposed exceptions to the new 20 mph limit in built-up areas. In my view, the present 30 mph sections on the A5025 through Amlwch and Bull Bay should be added to this list. This is a through route on a fairly wide A road with good visibility and some long straight sections; housing is generally set well back from the road, and there are pavements on both sides nearly the whole way (very similar to the A5025 through Pentraeth, which, correctly, is proposed to be mostly kept at 30 mph). There may be justification for a short section of 20 mph either side of the pedestrian crossing in the centre of Amlwch, but to apply this limit to the whole of the two 30 mph sections seems disproportionate.

Reducing the speed limit on the main road is also likely to push more people travelling between Benllech and Cemaes into taking the shorter route via Ffordd Tanybryn and the B5111 Ffordd Burwen, as this would be substantially quicker than crawling along the A5025 at 20 mph. (Ffordd Tanybryn has speed bumps and is already partly 20 mph, so the new limits will make little difference to journey times on that route, whereas the A5025 will be slowed considerably.) Increasing the amount of traffic on a road that runs past a school and leisure centre hardly seems like the desired consequence of these changes.

Thank you for reading,

██████████

██████████

Sylw/Gwrthwynebiad 7

From

[REDACTED]

We note that there has been no exception made for the A5025 through Benllech.

I would like to suggest that the Council reconsider that position.

I suggest that the A5025 through Benllech be maintained as a 30mph limit.

If there is to be any 20mph limit it should be just through the village centre, ie between the bowling green and the Doctors surgery.

Regards

[REDACTED]

[REDACTED]

Sylw/Gwrthwynebiad 8

Annwyl Robyn Jones,

Dwi'n cefnogi'r cynlluniau sydd wedi cyhoeddi gan yr Adran Briffyrdd ar gyfer 20mya a'r eithriadau sydd wedi amlinellu i gadw 30mya ar rai darnau o'r priffyrdd.

Yr eiddoch yn gywir,

[REDACTED]

[REDACTED]

[REDACTED]

Sylw/Gwrthwynebiad 9

Whilst I doubt that my or any other's response to the 20 mph issue will have the slightest effect, I would in any case like to register my objections to ANY such limit with the exception of the locations of schools or similar establishments. Apart from being just another traffic annoyance measure, such new limits will achieve very little and cost a fortune.

Regards,

[REDACTED]

Sylw/Gwrthwynebiad 10

Hello Robyn,

I note the results of the trials. These were generally unfavourable. The reduced speeds led to greater congestion and emissions. Drivers and owners of roadside properties became frustrated with the delays caused by slow movement of traffic. It is surprising the Welsh Government went ahead with this policy given the negative feedback.

Considering this, 17 roads to remain 30mph is an extremely small number. Ynys Mon Council seem to have approached the changes from the wrong direction.

The policy is to reduce serious injury from accidents. So, no doubt you have identified specific roads, for example, past schools and public buildings, and used the accident statistics of accidents over the last 50 years on Ynys Mon, and in particular those that have occurred within the current 30mph limits, to identify the need for reduced speed limits.

Given this information and the results of trials it would seem reasonable that as a default 30mph limits should remain, unless identified by the above.

This would be more economical, as there would not be any need to change all the 30mph signs. Or mark roads

Whatever the outcome of the consultation it is important to monitor the effect of the changes.

20mph is going to be extremely difficult for drivers to maintain and there should be a period of at least two years to allow drivers to adjust and before drivers are fined for exceeding the limits up to 30mph.

This will alleviate concerns that this is just a revenue raising exercise.

I trust you will share my views with the consultation committee.

Please inform me if there is going to be a public meeting regarding this matter.

Regards

[REDACTED]

[REDACTED]

[REDACTED]

[REDACTED]

Sylw/Gwrthwynebiad 11

I am writing to object to the traffic regulation order for A5025, Cemaes Bay, Order 202, from 10 May 2023. The order is to set the speed limit along the A5025 at 30mph, instead of the 20mph it would be changed to after 17 September. This section of road should remain at 20mph, with the 20mph section extended to the north east until leaving the village.

As it currently stands with the 30mph speed limit, very few people drive anywhere near 30mph through this section of the A5025. The cars coming south west do not slow down at all when the speed limit changes at the current sign, and cars traveling from the roundabout heading north east absolutely gun it from the roundabout until the speed limit changes after the intersection with Gwelfor. Cars regularly travel past at 60+ mph, with the incredibly loud exhaust cars driven quite aggressively easily being hard across the entire estate, and down the river walk. On the weekends it often sounds like I live next to a racetrack.

This is a very popular section of road for people to walk through, and even though I live here I seldom walk that section of the A5025 because of the feeling of danger with so many cars driving so fast at such close proximity, there isn't any separation between the road and pavement and it's not suitable for people driving at motorway speeds. On top of that, at the intersection with Gwelfor, there are people crossing the A5025 regularly who are out for walks as the old brick works is across the street. The walkers down the road, or people crossing, often have small children with them or dogs, and the way people drive through here it's only a matter of time before something tragic happens.

Without ongoing regular enforcement I highly doubt any change will ever happen, but at least if the speed limit is set to 20mph maybe some more people will actually drive closer to 30.

Sylw/Gwrthwynebiad 12

Dear Sir,

I am writing to strongly object to the introduction of blanket 20 mph speed limits, to replace existing 30mph limits. This is nothing more than an act of gross, vindictive stupidity from the communist lunatics that run (ruin?) Wales.

Reducing the limits to this ridiculously low speed will cause more pollution (no vehicles run efficiently at 20 mph), congestion and accidents as drivers concentration will drop when travelling at unnecessarily slow speeds. The roads will be considerably more dangerous for drivers, cyclists and pedestrians.

The exemptions you propose are woefully inadequate and appear to have been chosen where the change can be implemented without too much cost (hardly the right reason to do so). No A roads, passing through towns and villages, should ever be considered for this 20mph limit for the reasons noted in the second paragraph. It seems bizarre that Amlwch and Benllech are not included in the exemptions, as the present 30mph limit on the A5025 through these seems perfectly safe and reasonable. I am not aware of high accidents levels associated with these sections of road. The lower limit can only really be justified for short sections through housing estates or where a specific hazard has been identified, but definitely not on any main road.

I'm sure that you realise that most drivers will ignore this new limit because it is unjustifiable and blatantly ridiculous. Sadly too many of the 'drive very slowly' brigade will go through these limits at little more than walking pace. This whole crazy ruling will cause an awful lot of problems but will, no doubt, generate plenty of fines which is probably what it's all about.

As this will be implemented, by the government, as an act or statute (maritime law) the consent of the people is required before it can be enforced. Without an individual's specific consent the attempted enforcement is illegal.

I understand that trials done in North Wales were not a success and some of the lower limits were removed because of the problems caused. I'm sure that you've studied these and taken note of the issues before committing to the same mistakes - if only!

I do not expect you to take any notice of the consultation as the decision has been made. Democracy at it's finest!

Regards

[REDACTED]
[REDACTED]
[REDACTED]
[REDACTED]
[REDACTED]

Sylw/Gwrthwynebiad 13

Dear Sirs,

What a complete farce! We do not need 20mph anywhere except where schools are.

PLEASE stop interfering with Rhosneigr high street. You can't go faster than 20 there anyway.

What about Llanfaelog they bomb though there going past rehoboth terrace and up from Aberffraw.

Slower cars, lower gears more pollution, fuel waste and increased road rage stress!

Also sneaky again putting it out of season when less busy so to upset the people who live here permanently

It will not make people use public transport as it's not fit for purpose. I would be unemployed if I had to rely on the pathetic services on the island.

AGAINST!

Regards

A black rectangular redaction box covering the signature of the sender.